



United States  
Department of  
Agriculture

Foreign  
Agricultural  
Service

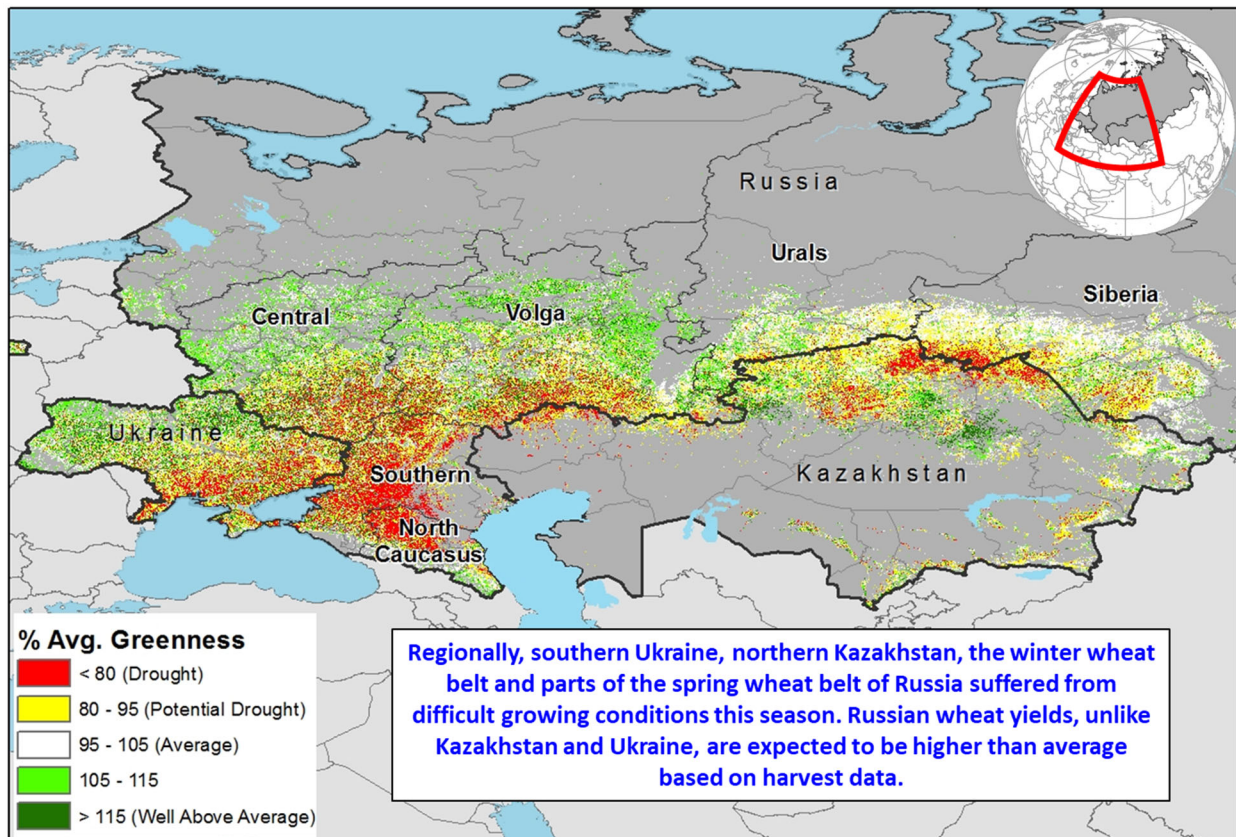
Circular Series  
WAP 10-20  
October 2020

# World Agricultural Production

## Russia Wheat: Record Spring Wheat Yields Boost Total Production to Second Highest

USDA estimates Russia wheat production for 2020/21 at 83.0 million metric tons (mmt), up 6 percent from last month, and up 13 percent from last year. The estimate includes 58.0 mmt of winter wheat and 25.0 mmt of spring wheat. USDA crop production estimates for Russia exclude estimated output from Crimea. Total wheat yield is estimated at 2.93 tons per hectare, up 6 percent from last month, and up 9 percent from last year. Total area is estimated at 28.3 million hectares (mha), unchanged from last month and up 4 percent from last year.

### Percent of Average Seasonal Greenness (PASG) 7/3-9/28/2020

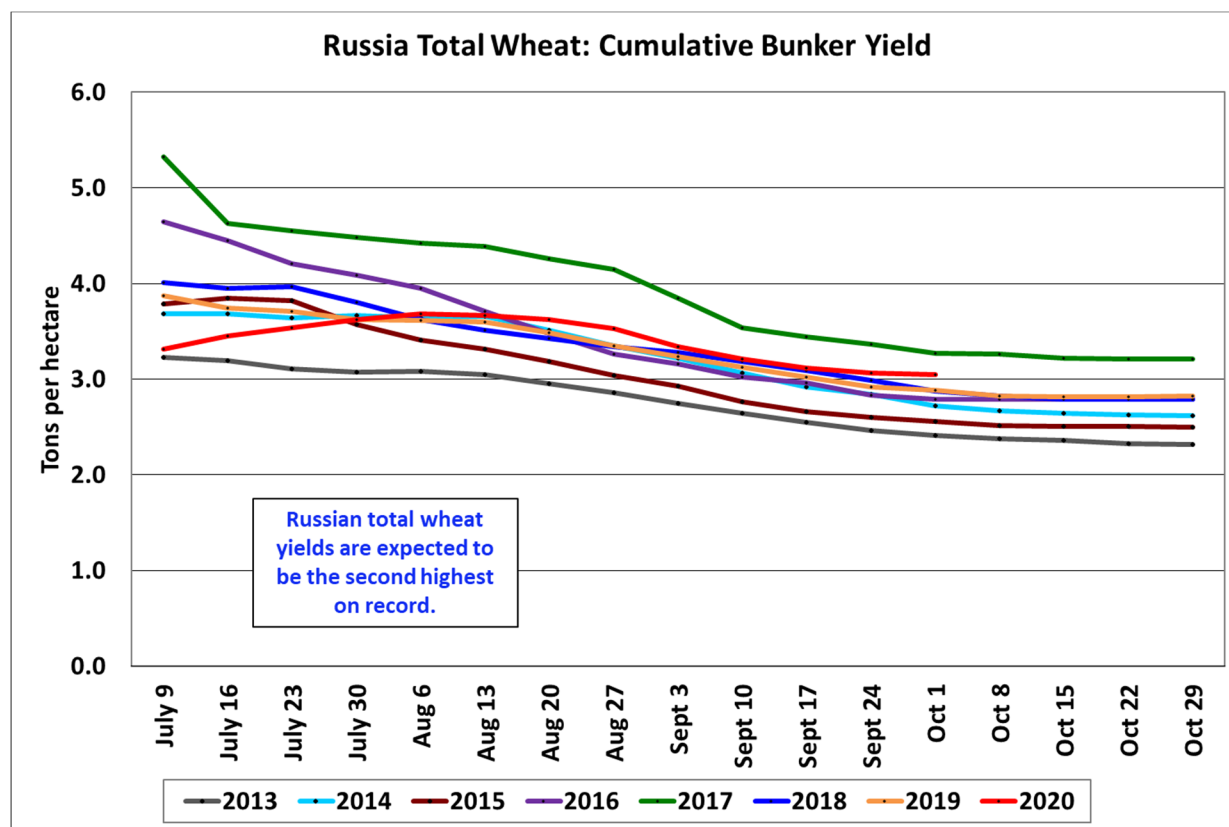


Source: NASA MODIS Imagery  
IIASA-IFPRI Hybrid Crop Cover (2015)

Foreign Agriculture Service  
Global Market Analysis  
International Production Assessment Division

Approved by the World Agricultural Outlook Board

Harvest for the winter wheat season was complete as of mid-August. Weather conditions for the winter wheat crop were mixed across the main wheat growing districts throughout the season. Issues with dry conditions in Stavropol and parts of the Southern District throughout the season were offset by a bumper crop in the Central and Volga Districts.

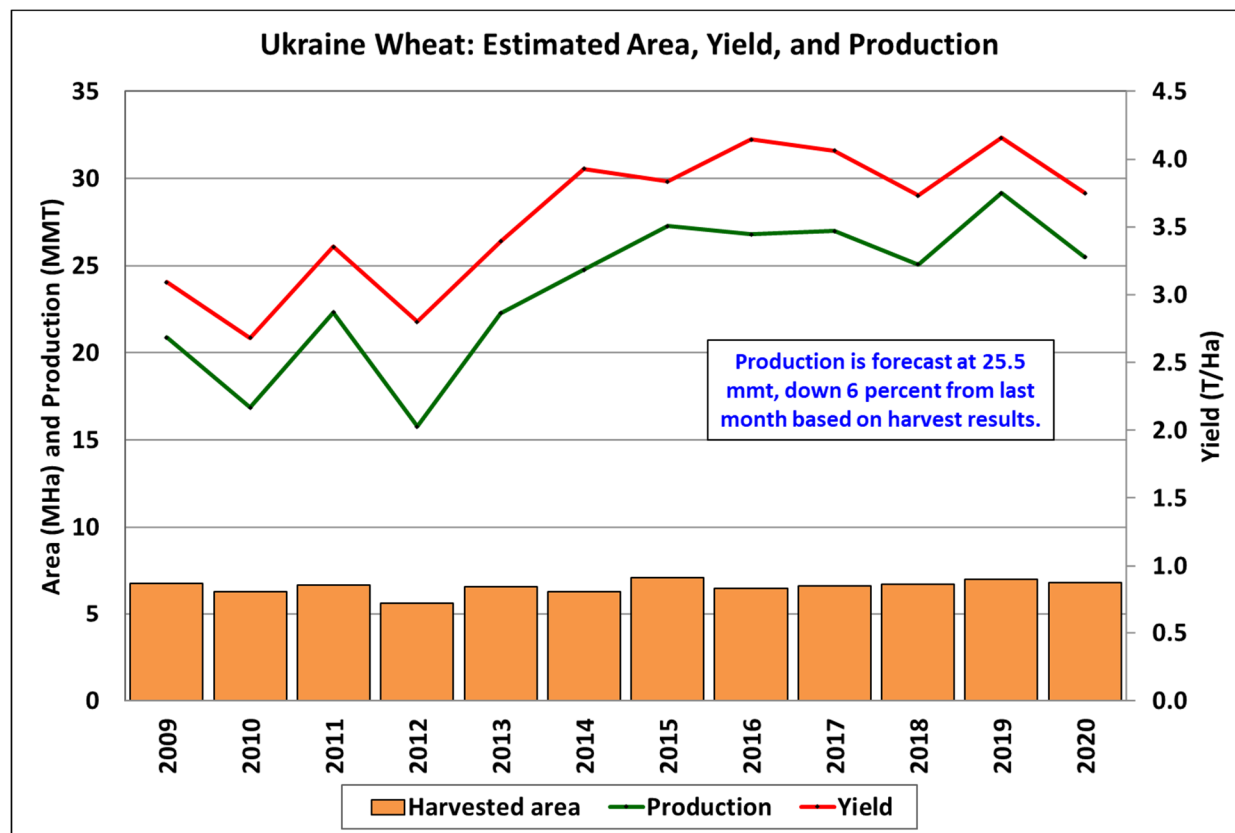


Spring wheat harvest is almost complete. Above average conditions, especially in the northern regions of the spring belt, helped to boost yields in the typically lower yielding regions along the Kazakhstan border for a total country yield record. In the last few years, an increase in the use of improved seed varieties and the growth of modern agricultural technologies such as fertilizers and modern machinery have helped to increase farmer’s wheat yields (See [Russian GAIN Report](#) for more information). As of October 7<sup>th</sup>, the Russian Ministry of Agriculture (which includes Crimea in their harvest results) stated that harvest was complete on 28.6 mha with a bunker output (prior to cleaning and drying) at 86.6 mmt. USDA publishes net output (not bunker output) and uses an average net-to-bunker ratio to make the conversion.

Area, yield, and production estimates for Russia winter wheat and spring wheat are available on PSD Online. Select “Downloadable Data Sets” and open the zipped file for “Russia Wheat; Winter/Spring Area & Production” (For more information, please contact [Katie.McGaughey@usda.gov](mailto:Katie.McGaughey@usda.gov).)

## Ukraine Wheat: Final Harvest Results Lower Yield Further

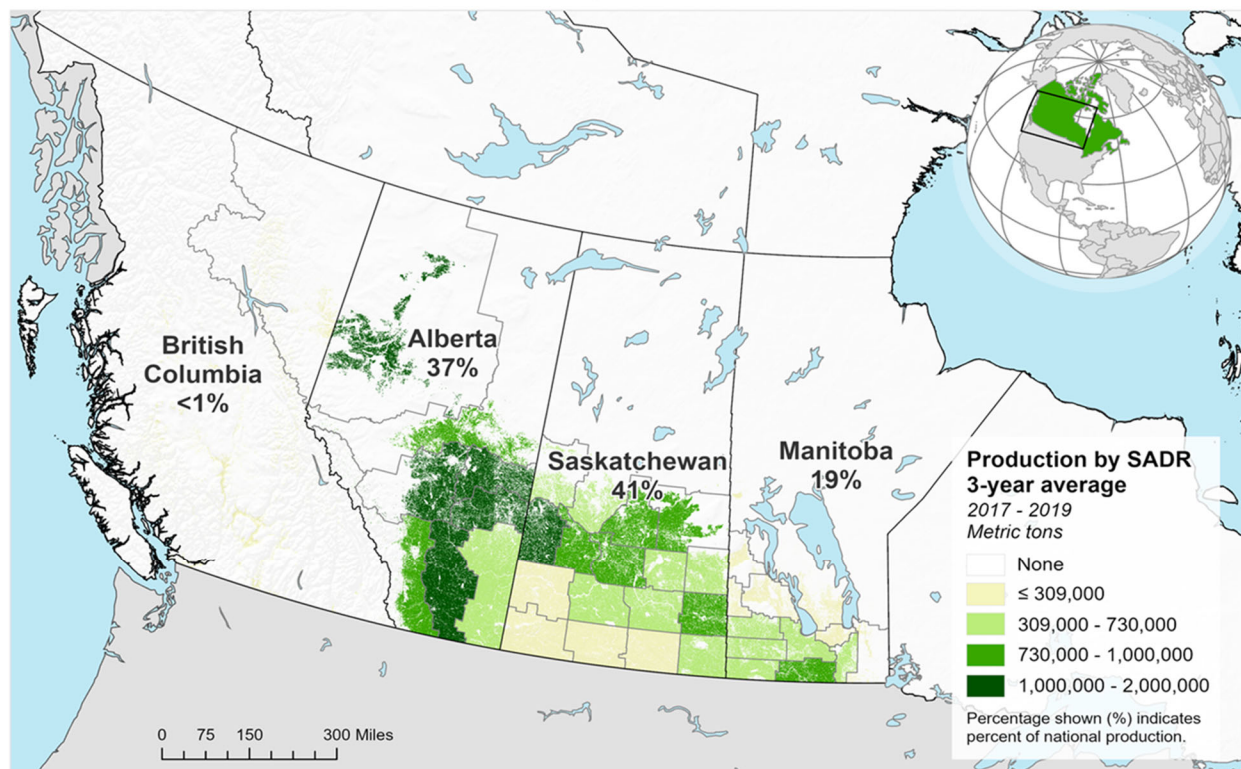
Ukraine wheat production for 2020/21 is estimated at 25.5 million metric tons (mmt), down 6 percent from last month and down 13 percent from last year. Yield is estimated at 3.75 tons per hectare, down 6 percent from last month and down 10 percent from last year. Harvested area is estimated at 6.8 million hectares, unchanged from last month but down 3 percent from last year.



Wheat in Ukraine is divided into two seasons: winter wheat, which accounts for the bulk of production at 97 percent, and spring wheat, which accounts for about 3 percent of total production. The month-to-month decrease in yield is due to final harvest results from the State Statistical Service of Ukraine. Conditions were variable throughout the growing season with drier-than-average conditions throughout most of the southern oblasts of Ukraine (the Steppe Zone), which led to deteriorating conditions. There were more favorable conditions in the northern region of the country (the Forest Zone). Ultimately, the higher yielding areas in the north were not able to offset the lower-than-average yields in the southern oblasts. USDA crop production estimates for Ukraine include estimated output from Crimea. *(For more information, please contact [Katie.McGaughey@usda.gov](mailto:Katie.McGaughey@usda.gov).)*

## Canada Wheat: Production Revised Down on Lower Yield Estimate

### Canada: Spring Wheat Production

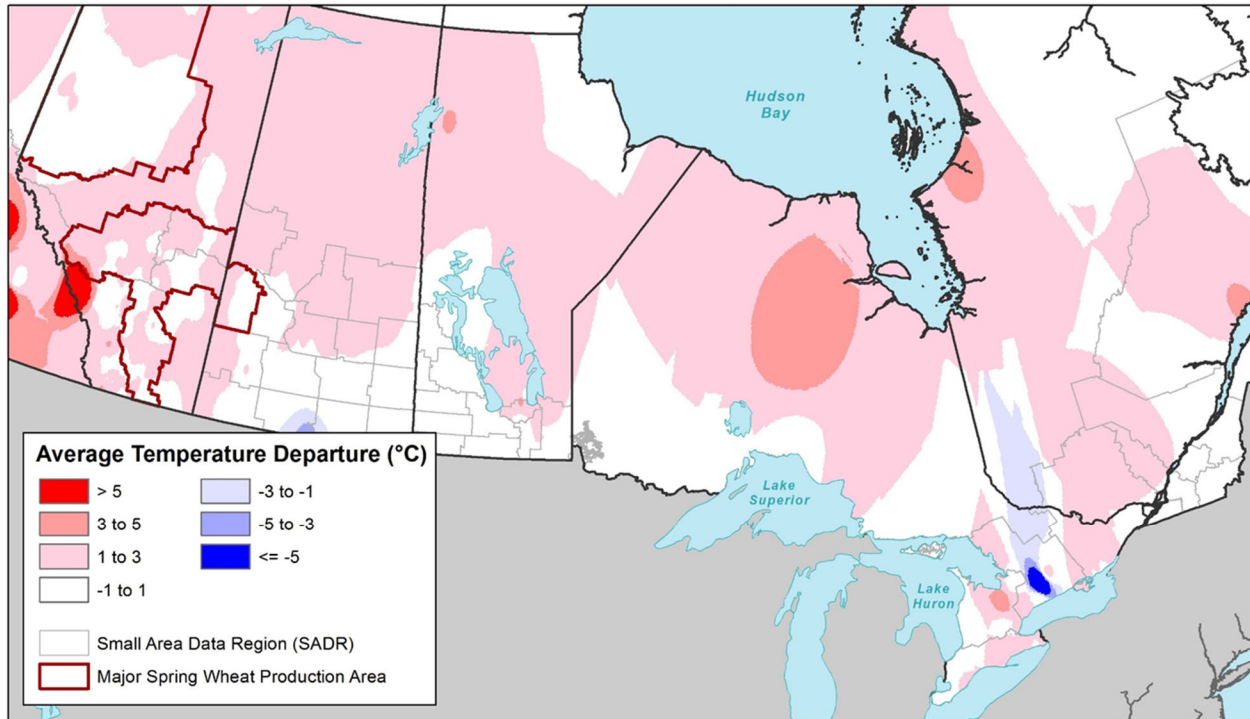


**USDA** Foreign Agriculture Service  
Global Market Analysis  
International Production Assessment Division

SOURCES: Statistics Canada, Estimated production by Small Area Data Region (SADR); AgCanada Cropland Inventory 2018

USDA estimates Canada wheat production for 2020/21 at 35.0 million metric tons (mmt), down 1.0 mmt or 3 percent from last month, but up 8 percent over last year, and 13 percent above the 5-year average. Harvested area is estimated at 9.9 million hectares, unchanged from last month, and up 3 percent from last year, and 5 percent above the 5-year average. Yield is forecast at 3.54 metric tons per hectare, down 3 percent from last month, but up 6 percent over last year, and 7 percent above the 5-year average.

### Average Temperature Departure (°C) – July 21 to 31, 2020



Foreign Agricultural Service  
 Global Market Analysis  
 International Production Assessment Division

Sources: WMO; Statistics Canada, Estimated production by Small Area Data Region (SADR)

Much of the major spring wheat-producing areas in Alberta and Saskatchewan experienced temperatures of 1° to 3°C above average in late July. The timing of these warmer-than-average temperatures, occurring in the latter part of the growing season, has reportedly caused early maturation in some durum and spring wheat, limiting yield potential. Durum and spring wheat constitute 19 and 73 percent of the total Canadian wheat crop, respectively.

Statistics Canada (StatCan) announced its model-based crop estimates on September 14<sup>th</sup>, also revising its wheat estimates downward. StatCan reduced its expected yield for spring wheat by 3 percent, and durum by over 11 percent, from its previous expectations, which were announced in August. StatCan also reduced its production estimates for winter wheat by 1 percent. Even with these downward revisions, both USDA and StatCan expect the largest wheat crop since 2013, and the third-highest yield for wheat on record. *(For more information, please contact [Aaron.Mulhollen@usda.gov](mailto:Aaron.Mulhollen@usda.gov).)*

## Ukraine Corn: Early Harvest Results and Dry Conditions in the Corn Belt Lower Yield

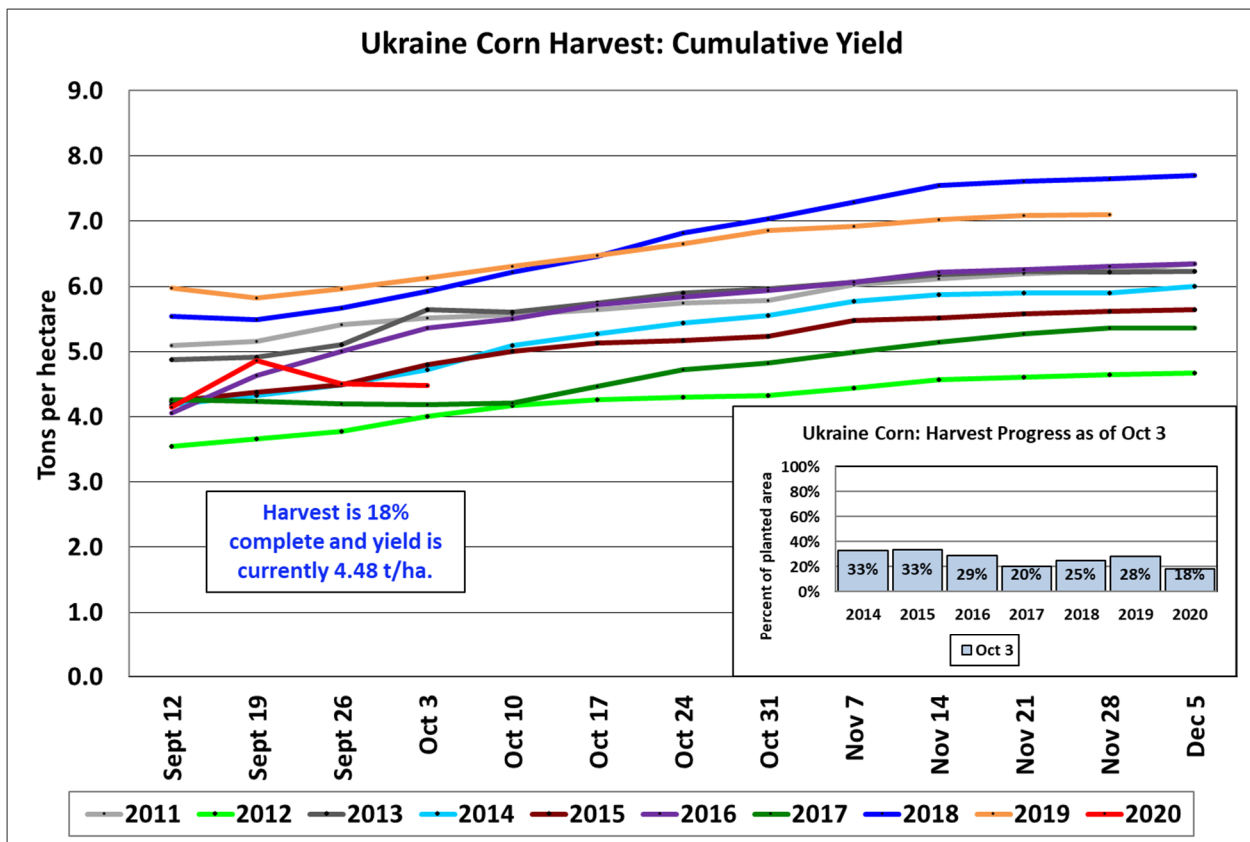
### UKRAINE: Percent Normal Precipitation (July 1- September 30, 2020)



Source: World Meteorological Organization

Foreign Agriculture Service  
Global Market Analysis  
International Production Assessment Division 

Ukraine corn production for 2020/21 is estimated at 36.5 million metric tons (mmt), down 5 percent from last month, but up 2 percent from last year. Yield is estimated at 6.76 tons per hectare (t/ha), down 5 percent from last month and down 6 percent from last year. Harvested area is estimated at 5.4 million hectares, unchanged from last month and up 8 percent from last year.



The month-to-month decrease in yield is based on early harvest results from the Ukrainian Ministry of Agriculture due to continued dryness and warmer-than-average temperatures in the Ukrainian corn belt throughout August and September, including the higher producing oblasts in the Forest-Steppe Zone. Yields are still expected to be the third highest on record, even with the dry conditions, due to the increased use of hybrid varieties. Harvest is ongoing and as of October 1<sup>st</sup> is about 18 percent complete. USDA crop production estimates for Ukraine include estimated output from Crimea. *(For more information, please contact [Katie.McGaughey@usda.gov](mailto:Katie.McGaughey@usda.gov).)*

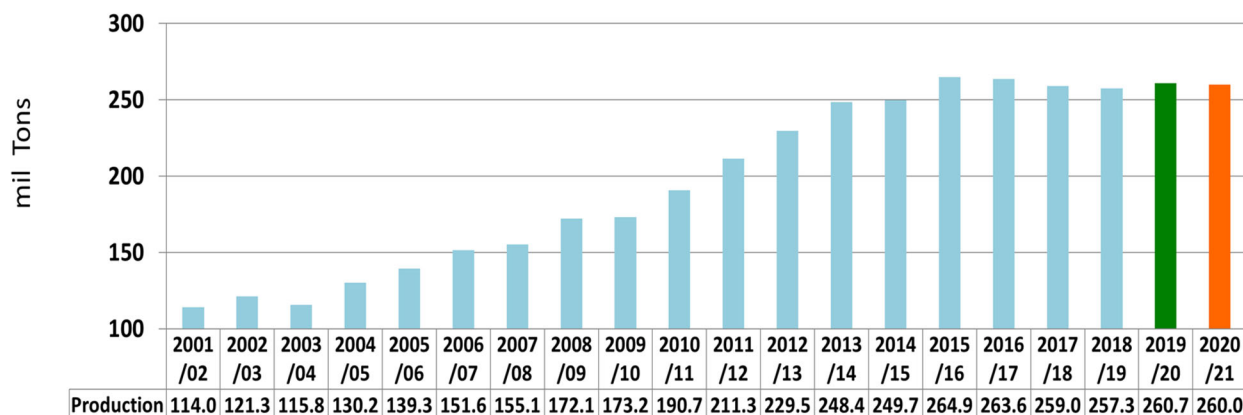
### China Corn: Production Remains Unchanged from Last Month

USDA estimates China 2020/21 corn production at 260.0 million metric tons (mmt), down 0.78 million or less than 1 percent from last year and down less than 1 percent from the 5-year average of 261.1 mmt. Yield is estimated at 6.19 metric tons per hectare, down 2 percent from last year. Area is estimated at 42 million hectares, up approximately 0.7 million or 1.7 percent from last year. In recent years, there has been a marginal increase of corn area primarily due to changes in agricultural policy.

There are three major factors shaping the USDA’s estimate: favorable growing season conditions, government policies encouraging increased corn production, and typhoon occurrences in September. The season has been characterized by favorable growing conditions across the major corn belt, the northeast, and north central plains. The ideal crop weather, for the major part of the

growing season, was in the northeast provinces of Heilongjiang, Jilin, and Nei Mongol where at least half of the nation’s corn and soybeans are produced. The conditions facilitated rapid planting and crop establishment.

China Corn Production: USDA PSD Time Series



USDA Foreign Agricultural Service  
Global Market Analysis  
International Production Assessment Division

Source: USDA PSD

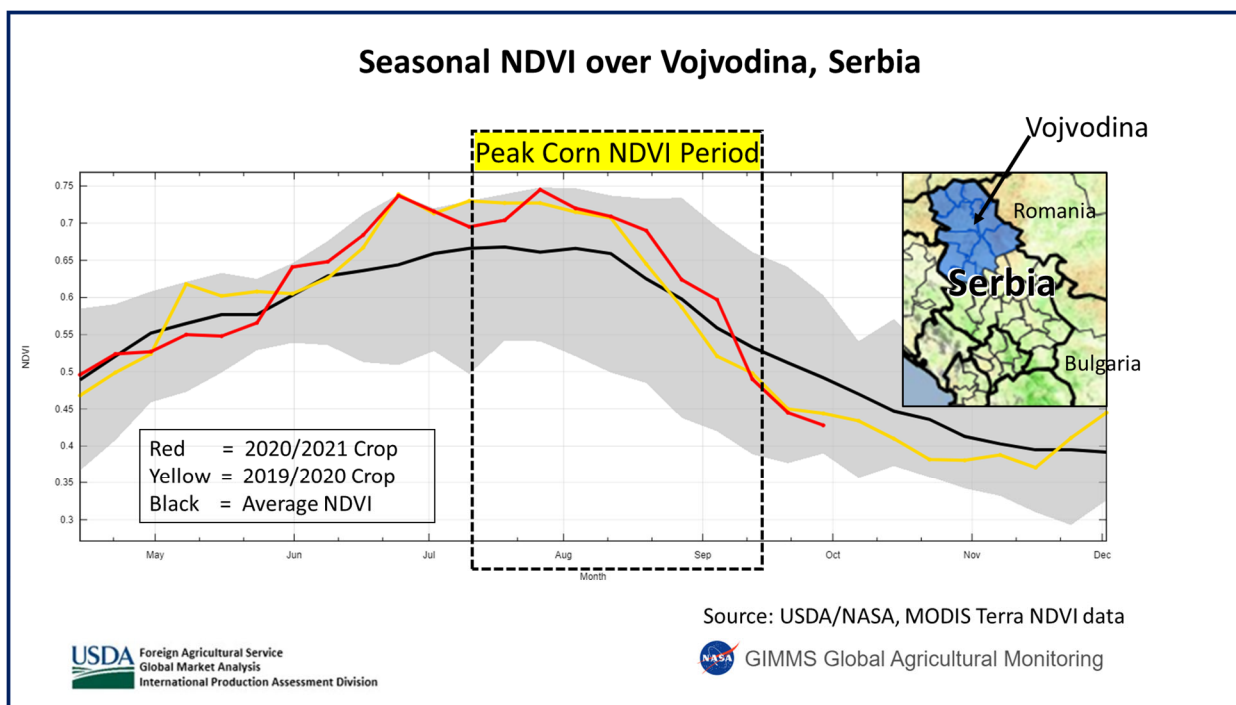
In addition to the favorable seasonal conditions, farmers were encouraged by the revised government policies which include the reversal of past efforts to reduce corn area, and the government provision of targeted incentives and subsidies to corn processors, along with ethanol program initiatives. These changes reduce the area left fallow while increasing crop rotations between grain crops. The policies are expected to contribute to the increase in corn production. Approximately 90 percent of China’s corn is used for feed and there were reports of rebound in feed and industrial use.

During the first week of September, typhoons in some regions of the northeast provinces raised concerns about the final crop prospects. There have also been reports that in response to the extensive lodging in corn and rice from recent typhoons, regional governments have taken unprecedented measures to minimize the harvest losses. *(For more information, please contact [dath.mita@usda.gov](mailto:dath.mita@usda.gov).)*

### Serbia Corn: Favorable Weather Drives Record Yields

Serbia corn production for 2020/21 is estimated at a record 8.0 million metric tons (mmt), up 0.8 mmt (11 percent) from the last month, up 0.3 mmt (4 percent) from last year, and 24 percent above the 5-year average. The 2020/21 crop follows a record 7.7 mmt crop in 2019/20. Area is estimated at 1.0 million hectares (mha), up 50 thousand hectares from last month and up 30 thousand hectares from last year. Area is slightly above the 5-year average. Yield is estimated at a record 8.0 tons per hectare (t/ha), up 6 percent from last month, up 1 percent from last year, and 22 percent above the 5-year average of 6.6 t/ha.





Recent data released by the Statistical Office of the Republic of Serbia confirm that favorable growing conditions with frequent and timely rains have benefitted the country’s predominant crop, corn. Satellite-derived Normalized Difference Vegetation Index (NDVI) depicts a highly vigorous signal during the summer in the large northern growing region of Vojvodina. This indication correlates to increased yields. Serbia and its neighbors in the Central European Plain – such as Hungary, eastern Croatia, and Western Romania – have seen similarly favorable conditions this season where rainfall has been sufficient, keeping soil moisture replenished. In addition, moderately warm temperatures have prevented heat damage. Serbia’s summer crops have little irrigation, thus are highly vulnerable to heat and drought damage, which can be seen in fluctuating yields and production over the years. With its rich soils, Serbia can produce a very large crop in years like 2020, when it has adequate and frequent rainfall and moderate temperatures.

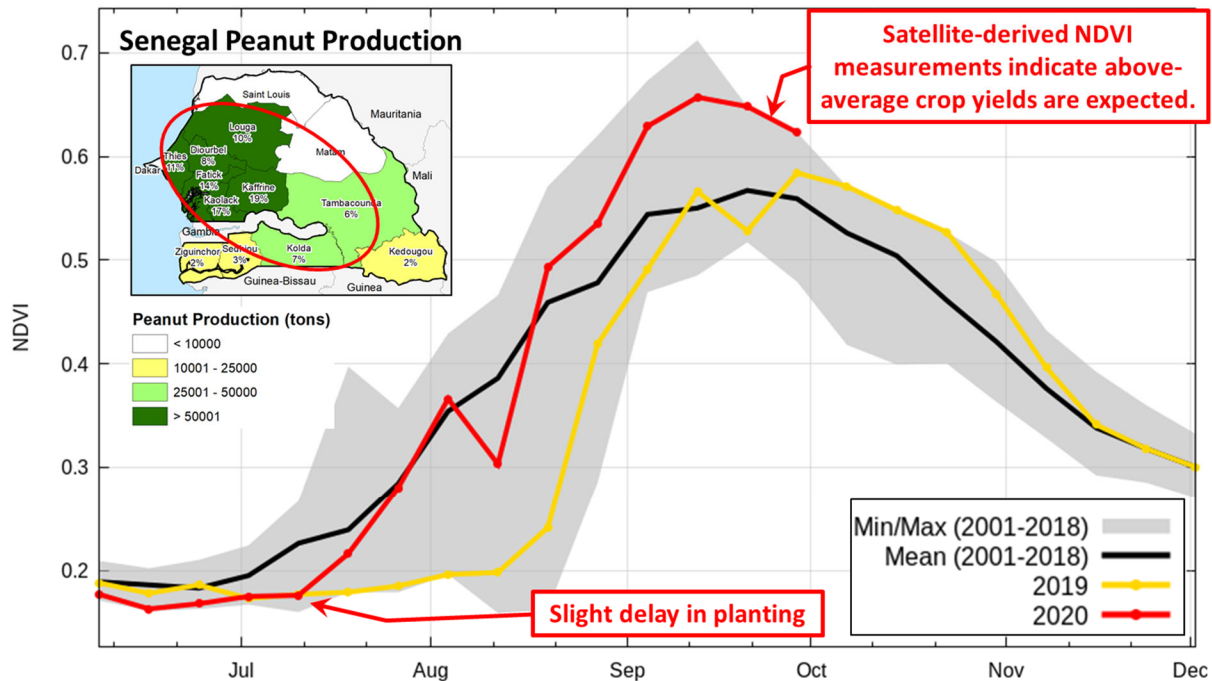
The corn harvest typically occurs in September and October. Serbia is not a member of the European Union. *(For more information, please contact [Bryan.Purcell@usda.gov](mailto:Bryan.Purcell@usda.gov).)*

### Senegal Peanuts: Favorable Rains Increase Production Prospects

Senegal peanut production for 2020/21 is estimated at 1.4 million metric tons (mmt), up 0.1 mmt (8 percent) from last month but down 0.02 mmt from last year. Harvested area is estimated at 1.2 million hectares (mha), unchanged from last month but up 0.09 mha from last year. Yield is estimated at 1.17 metric tons per hectare (t/ha), up 7 percent from the five-year average of 1.09 t/ha. Yield is expected to be above-average due to favorable rains from July through September.

# Cropland NDVI for Eight Primary Producing Regions

(Dark and light green regions = 92 percent of total peanut production)



**USDA** Foreign Agricultural Service  
Global Market Analysis  
International Production Assessment Division

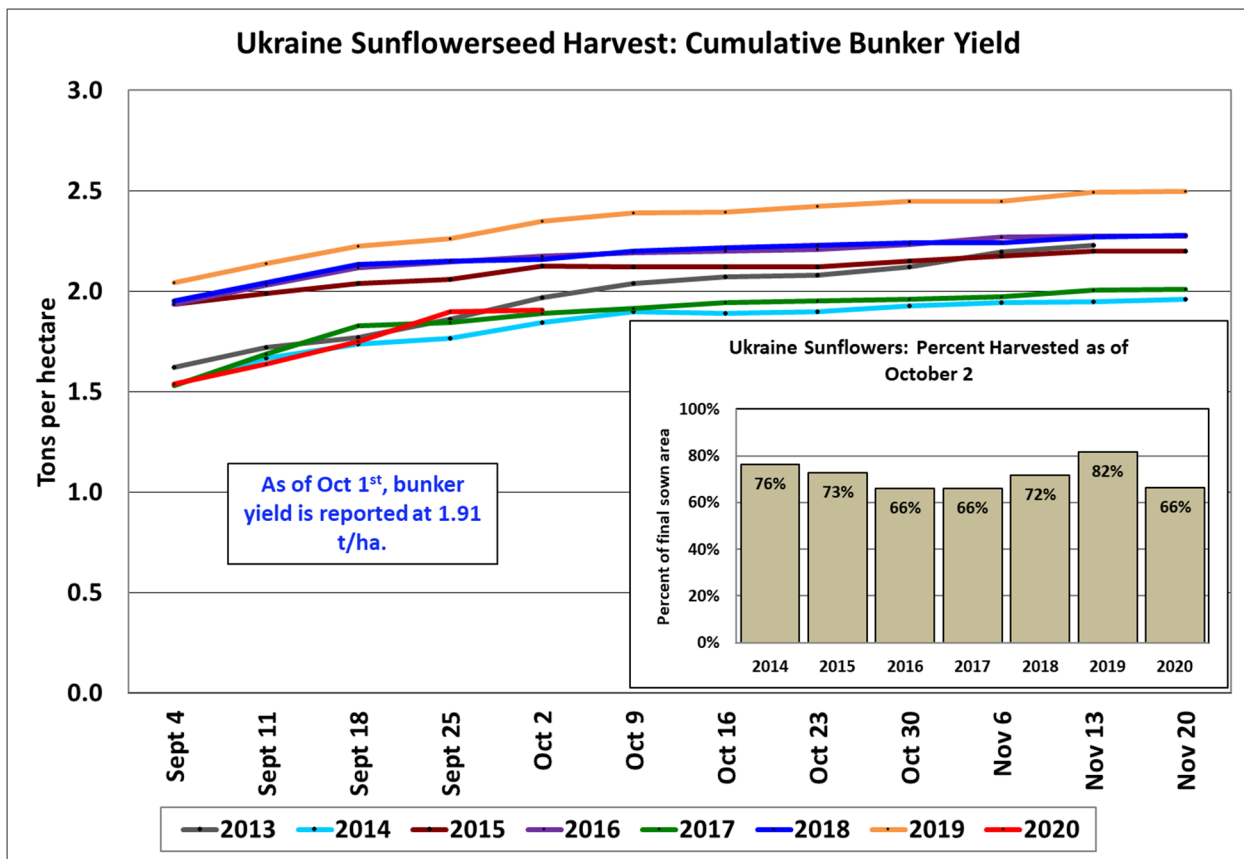
Sources: Cropland NDVI from USDA/NASA Global Agricultural Monitoring (GLAM) System  
Region production data (2012) from Direction de l'Analyse, de la Prevision et des Statistiques Agricoles (DAPSA).

Senegal's planting season is from mid-May through July and harvest is from September to the end of October. Planting was delayed by the late onset of rains in May, but precipitation was above average and well-distributed from July through September 2020. Satellite-derived Normalized Difference Vegetation Index (NDVI) measurements indicate above-average crop conditions from late August through September, therefore, above-average yields are expected.

Peanuts are primarily produced in central Senegal where the following eight regions comprise approximately 92 percent of total production: Kaffrine (19%), Kaolak (17%), Fatick (14%), Thiès (11%), Louga (10%), Diourbel (8%), Kolda (7%) and Tambacounda (6%). Harvested peanut area has been over 1 million hectares since 2015 and production has been over 1 million tons since 2017. (For more information, please contact [Curt.Reynolds@usda.gov](mailto:Curt.Reynolds@usda.gov).)

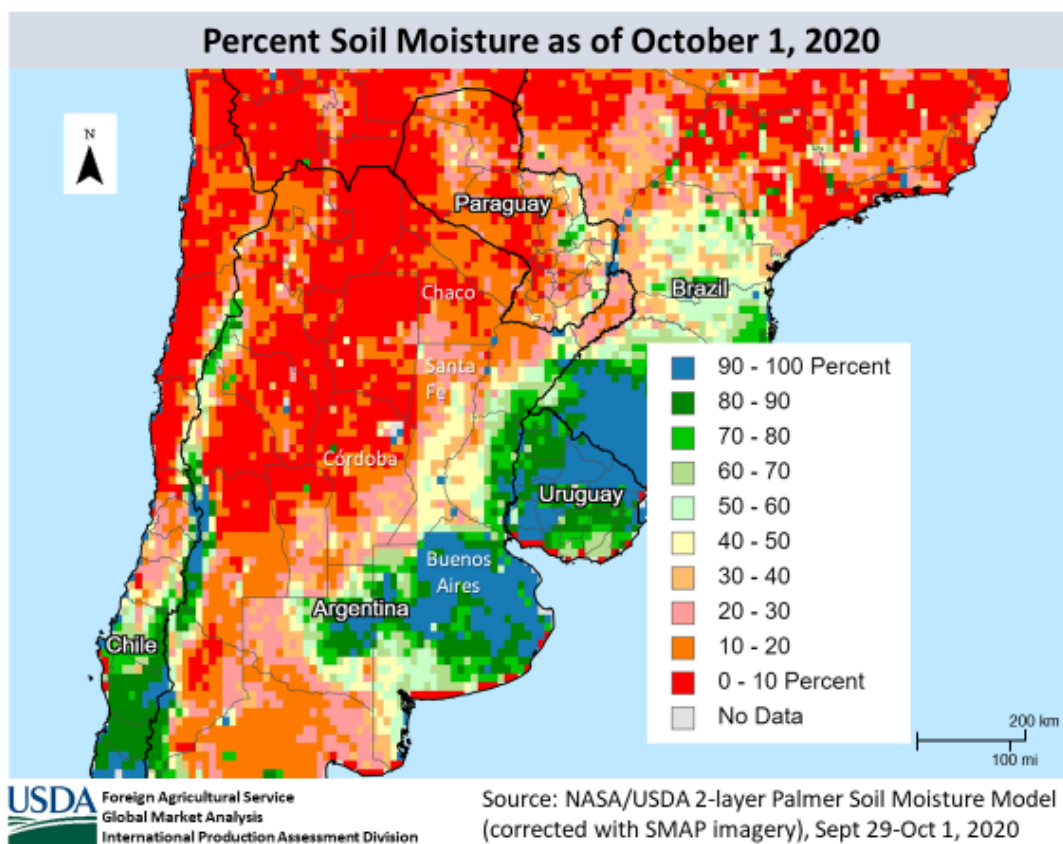
## Ukraine Sunflowerseed: Harvest Data and End of Season Dryness Lower Yield

Ukraine sunflowerseed production for 2020/21 is estimated at 15.0 million metric tons (mmt), down 12 percent from last month and down 9 percent from last year. Yield is estimated at 2.21 tons per hectare (t/ha), down 12 percent from last month and down 14 percent from last year. Harvested area is estimated at 6.8 million hectares, unchanged from last month and up 6 percent from last year.



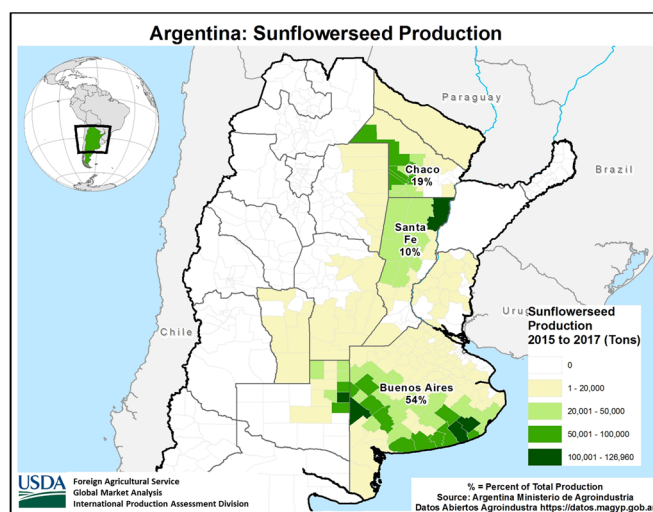
The month-to-month decrease in yield is based on dryness and initial harvest results from the Ukrainian Ministry of Agriculture. Yields in the two main growing regions, the Steppe Zone, which accounts for about 55 percent of production and the Forest-Steppe Zone, which accounts for about 41 percent of production, are down year-to-year. The Ukrainian Ministry of Agriculture publishes a bunker yield number, but the net-to-bunker conversion has been increasing in the last few years. In the last few years, the bunker yields have been nearing net yields. As of October 1<sup>st</sup>, harvest is about two-thirds complete and yields typically increase throughout harvest. USDA crop production estimates for Ukraine include estimated output from Crimea. *(For more information, please contact [Katie.McGaughey@usda.gov](mailto:Katie.McGaughey@usda.gov).)*

## Argentina Sunflowerseed: Dry Conditions Limit Area



USDA estimates Argentina sunflowerseed production for 2020/21 at 3.0 million metric tons, down 12 percent from last month and down 8 percent from last year. Area is estimated at 1.4 million hectares, 13 percent less than last month and down 9 percent from last year. Yield is estimated at 2.14 tons per hectare, up less than 1 percent from last month and up less than 1 percent from last year.

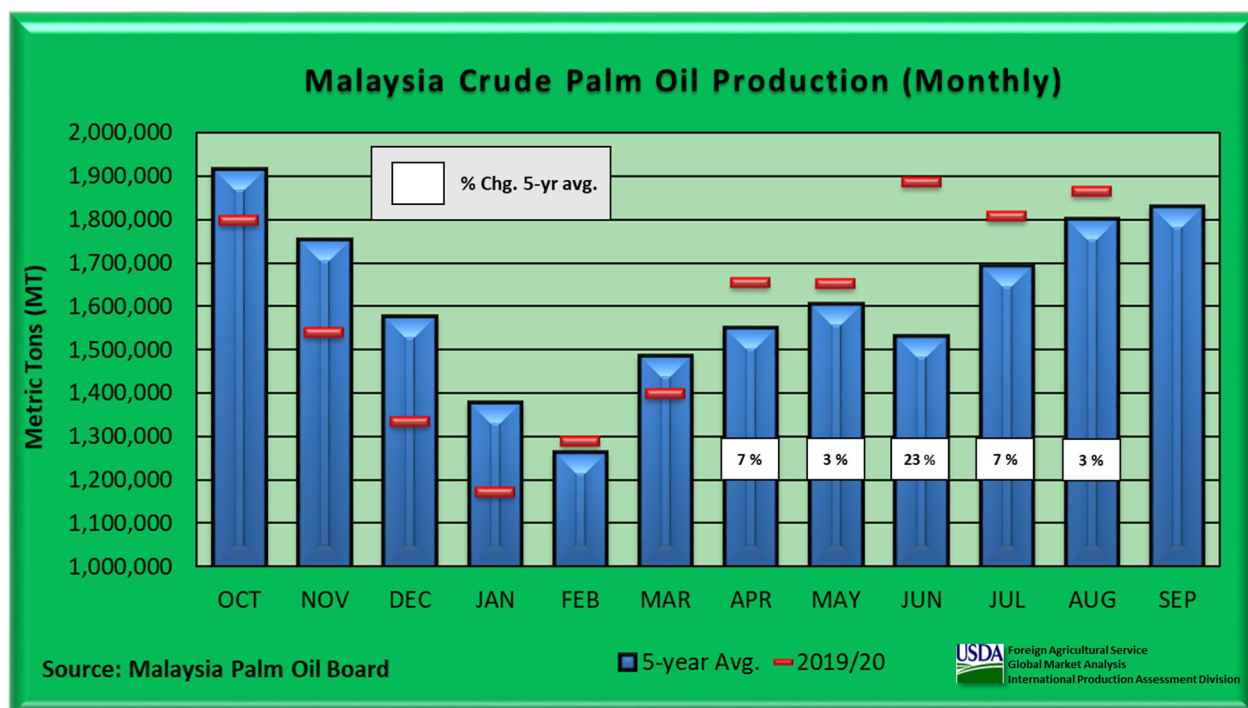
Crop conditions will be further defined by the rainfall over the next four weeks. Soil moisture is favorable in the province of Buenos Aires; however, increased precipitation is needed in northern and central Argentina. The combination of reduced rainfall and warmer-than-average temperatures has resulted in soil moisture deficits. *(For more information, please contact [Denise.McWilliams@usda.gov](mailto:Denise.McWilliams@usda.gov).)*



## Malaysia Palm Oil: Above Average Monthly Output Continues to Boost Estimated Production for 2019/20

USDA estimates Malaysia 2019/20 palm oil production at 19.2 million metric tons, up 1 percent from last month, but down 8 percent from the previous year. Harvested area is estimated at 5.4 million hectares, unchanged from last month, but up 1 percent from the previous year. Yield is estimated at 3.59 tons per hectare, up 1 percent from last month, but down 8 percent from the previous year.

Insufficient rainfall in 2019 led to a bleak beginning to Malaysia's palm oil season. However, recent monthly crude palm oil output has been well-above average. According to the Malaysia Palm Oil Board monthly data report, crude palm oil production has monthly output gains of 3 to 23 percent from the 5-year average for the past five consecutive months. These monthly increases have led to a boost in estimated production.

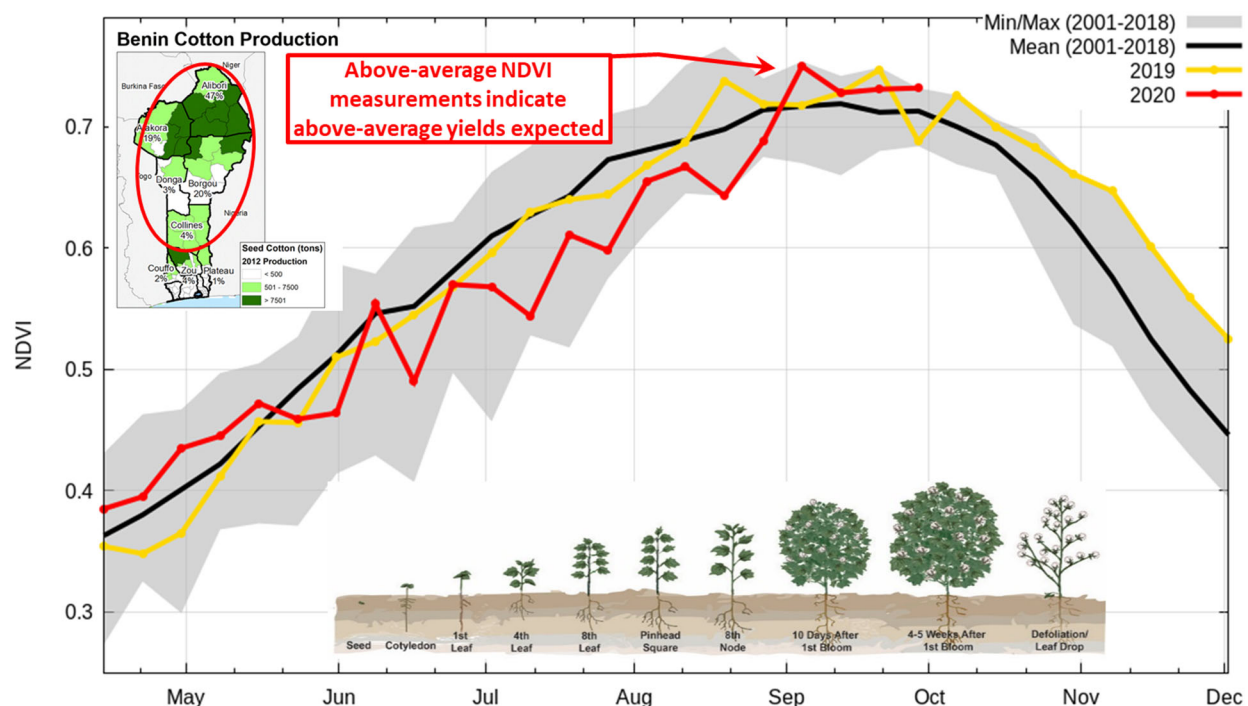


However, even with the recent boom of monthly crude palm oil output, aggregated production still lags the 5-year average by 1 percent and is below last year's record level by 8 percent. USDA's market year for Malaysia palm oil runs from October through September. *(For more information, please contact [Justin.Jenkins@usda.gov](mailto:Justin.Jenkins@usda.gov).)*

## Benin Cotton: Lower Production Prospects Despite Higher Yields

Benin's cotton production for 2020/21 is estimated at 1.35 million 480-pound bales, down 75,000 bales (5 percent) from last month and down 75,000 bales (5 percent) from last year. Harvested area is estimated at 600,000 hectares (ha), down 65,000 ha (10 percent) from last month and down 65,000 ha (10 percent) from last year. Yield is forecast at 490 kilograms per hectare (kg/ha), up 5 percent from last year and 11 percent above the 5-year average yield. Production prospects indicate Benin will be West Africa's leading cotton producer this year, despite planted area being less than last year.

## Relative Crop Conditions Measured by NDVI-MODIS



USDA Foreign Agricultural Service  
Global Market Analysis  
International Production Assessment Division

Source: Cropland NDVI-MODIS measurements from USDA/NASA Global Agricultural Monitoring (GLAM) system  
Cotton production data (2012) from Benin's Ministère de l'Agriculture, de l'Élevage et de la Pêche (MAEP).

Benin's cotton is sown from May to July and is harvested from October to December. Cotton is primarily produced in central and northern Benin. The following four departments comprise approximately 90 percent of Benin's total production: Alibori (47%), Borgou (20%), Atakora (19%), and Collines (4%). Satellite-derived Normalized Difference Vegetation Index (NDVI) measurements for the previously mentioned departments indicate above-average vegetation conditions in September and above-average yields are expected.

Benin has been West Africa's largest cotton producer since 2018, after government and private industry started to provide more timely supply of seed and fertilizer inputs and invested in modernizing the entire cotton supply chain. Benin's trend yield has increased in recent years and Benin's five-year average cotton yield of 443 kg/ha is one of the highest in West Africa. *(For more information, please contact [Curt.Reynolds@usda.gov](mailto:Curt.Reynolds@usda.gov).)*

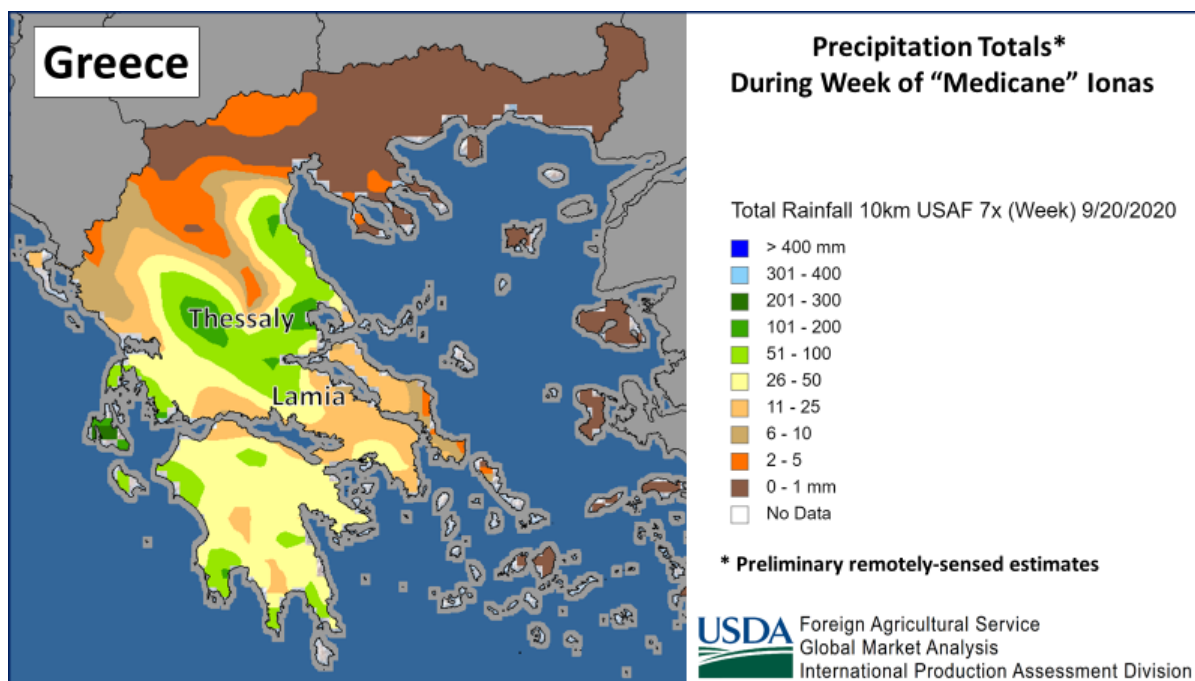
## Greece Cotton: Medicane Ionas Strikes Crop Just Prior to Harvest



USDA estimates Greece's 2020/21 cotton production at 1.3 million 480-pound bales, down 0.15 million bales from last month (10 percent), down 0.38 million bales from last year (22 percent), but up 2 percent above the 5-year average of 1.27 million bales. Harvested area is estimated at 0.26 million hectares (mha), down 0.1 mha from last month, down 0.25 mha from last year, but 8 percent above the 5-year average of 0.24 mha. Yield is estimated at 1,089 kilograms per hectare, down 7 percent from last month, down 15 percent from last year, and down 5 percent below the 5-year average.

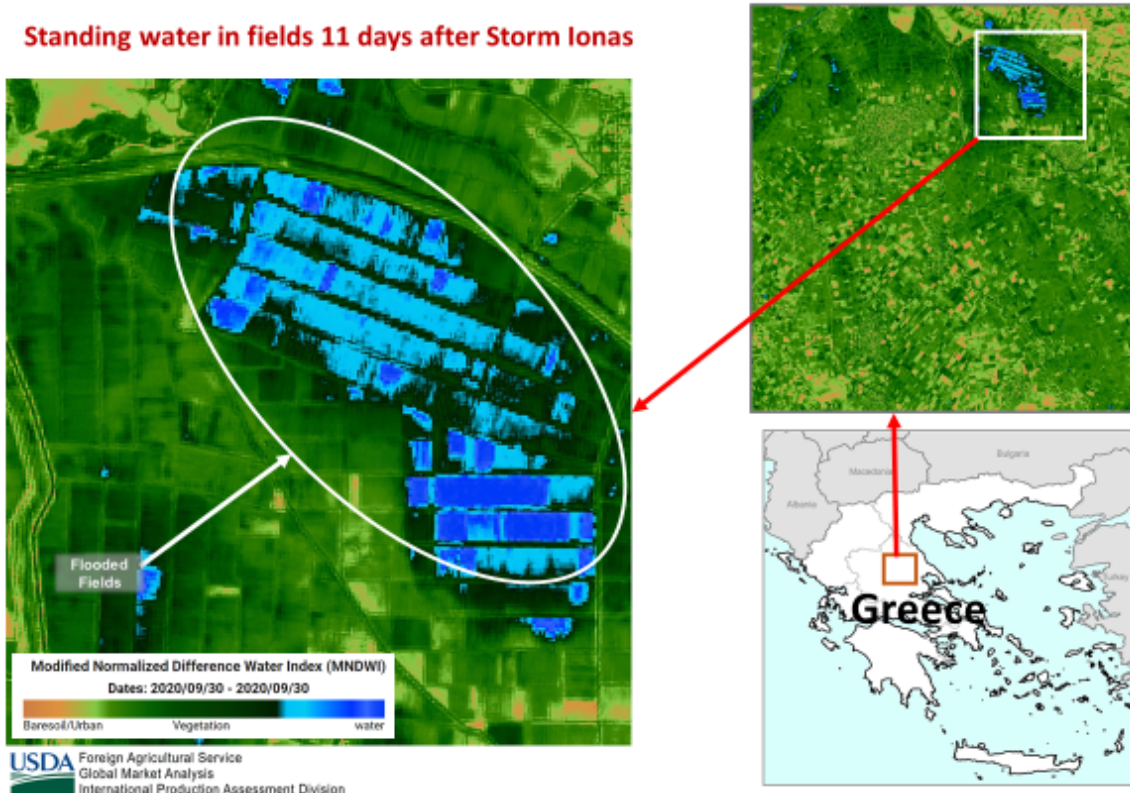
An uncommon occurrence of a Mediterranean hurricane, or medicane, made landfall on September 18<sup>th</sup> and impacted central Greece with flooding rains on September 19<sup>th</sup>, just prior to the cotton harvest. The cotton crop

took a direct hit by Medicane Ionas in the large production regions of Thessaly and Lamia. While 1 to 2 inches of rain were widespread, unofficial rainfall gauges in cotton areas of western Thessaly recorded 5 to 6 inches of rainfall in 24 hours. Area and yield are therefore estimated lower due to flooding losses and rain damage.



While some farmers anticipated Ionas’s destruction and reportedly harvested their crops early, this was the exception. In addition, any early-harvested cotton would likely have lower yield because the harvest was premature. Quality will also be lowered as the crop’s important color metric will have been reduced by the detrimental September weather. The cotton harvest typically occurs in October. Greece usually produces about 80 percent of the European Union’s cotton crop, with Spain producing nearly all the rest. Recent satellite imagery confirms standing water in fields after the storm passed, likely damaging the crop.

### RECENT STORM DAMAGE IN THESSALY, GREECE Modified Normalized Difference Water Index



For country-specific area, yield, and production estimates within the European Union (EU), please go to PSD Online at <https://apps.fas.usda.gov/PSDOnline/app/index.html#/app/home>, and select “Downloadable Data Sets.” Select the zipped file for “EU Countries Area & Production.” (For more information, please contact [Bryan.Purcell@usda.gov](mailto:Bryan.Purcell@usda.gov).)





**World Agricultural Production  
U.S. Department of Agriculture**

Foreign Agricultural Service / Global Market Analysis  
International Production Assessment Division (IPAD)

Ag Box 1051, Room 4630, South Building  
Washington, DC 20250-1051

<https://ipad.fas.usda.gov/>

Telephone: (202) 720-1662 Fax: (202) 720-1158

This report uses information from the Foreign Agricultural Service's (FAS) global network of agricultural attachés and counselors, official statistics of foreign governments and other foreign source materials, and the analysis of economic data and satellite imagery. Estimates of foreign area, yield, and production are from the International Production Assessment Division, FAS, and are reviewed by USDA's Inter-Agency Commodity Estimates Committee. Estimates of U.S. area, yield, and production are from USDA's National Agricultural Statistics Service. Numbers within the report may not add to totals because of rounding. This report reflects official USDA estimates released in the World Agricultural Supply and Demand Estimates (WASDE-584), October 9, 2020.

**Printed copies are available from the National Technical Information Service. Download an order form at [http://www.ntis.gov/products/specialty/usda/fas\\_a-g.asp](http://www.ntis.gov/products/specialty/usda/fas_a-g.asp), or call NTIS at 1-800-363-2068.**

The FAS International Production Assessment Division prepared this report. The next issue of World Agricultural Production will be released after 12:00 p.m. Eastern Time, November 10, 2020.

**Conversion Table**

Metric tons to bushels

Wheat, soybeans	=	MT * 36.7437
Corn, sorghum, rye	=	MT * 39.36825
Barley	=	MT * 45.929625
Oats	=	MT * 68.894438

Metric tons to 480-lb bales

Cotton	=	MT * 4.592917
--------	---	---------------

Metric tons to hundredweight

Rice	=	MT * 22.04622
------	---	---------------

Area & weight

1 hectare	=	2.471044 acres
1 kilogram	=	2.204622 pounds



For further information, contact:  
**U.S. Department of Agriculture**  
**Foreign Agricultural Service**  
**Global Market Analysis**

International Production Assessment Division  
 Ag Box 1051, Room 4630, South Building  
 Washington, DC 20250-1051

Telephone: (202) 720-1662

Fax: (202) 720-1158

**GENERAL INFORMATION**

Senior Director	Ronald Frantz	202-720-4056	ronald.frantz@usda.gov
Director	Robert Tetrault	202-720-1071	robert.tetrault@usda.gov
Administrative Assistant	Vacant		
USDA Remote Sensing Advisor	Vacant		
Sr. Analyst/Technical Lead	Curt Reynolds, Ph.D.	202-690-0134	curt.reynolds@usda.gov
Sr. Analyst/ Satellite Imagery Archives Manager/Technical Lead	Dath Mita, Ph.D.	202-720-7339	dath.mita@usda.gov
Sr. Analyst/Technical Lead	Jim Crutchfield	202-690-0135	james.crutchfield@usda.gov
GIS Mapping/Imagery Analyst	Lisa Colson	202-720-6652	lisa.colson@usda.gov
WAP Coordinators	Ifeoma Collins	202-720-0240	ifeoma.collins@usda.gov
	Aaron Mulhollen	202-690-0131	aaron.mulhollen@usda.gov

**COUNTRY- AND REGION-SPECIFIC INFORMATION**

South America, Argentina, Venezuela, and Colombia	Denise McWilliams, Ph.D.	202-720-0107	denise.mcwilliams@usda.gov
Western and Central Europe, and North Africa	Bryan Purcell	202-690-0138	bryan.purcell@usda.gov
Russia, Ukraine, Kazakhstan, Moldova, and Belarus	Katie McGaughey	202-720-9210	katie.mcgaughey@usda.gov
South Asia, Sri Lanka Bangladesh, India, and Nepal	Arnella Trent	202-720-0881	arnella.trent@usda.gov
East Asia, China, and Japan	Dath Mita, Ph.D.	202-720-7339	dath.mita@usda.gov
Sub-Saharan Africa, Nigeria and South Africa	Curt Reynolds, Ph.D.	202-690-0134	curt.reynolds@usda.gov
S.E. Asia, Indonesia, Thailand, Malaysia, Cambodia and Vietnam	Justin Jenkins	202-720-0419	justin.jenkins@usda.gov
Central America, Mexico, and Western United States	Ifeoma Collins	202-720-0240	ifeoma.collins@usda.gov
Australia, New Zealand, Pakistan Papua New Guinea and South Pacific Islands	Jim Crutchfield	202-690-0135	james.crutchfield@usda.gov
Middle East, Central Asia, Afghanistan Iraq, Iran, and Syria	Iliana Mladenova, Ph.D.		iliana.mladenova@usda.gov
Canada, Caribbean, Eastern United States	Aaron Mulhollen	202-690-0131	aaron.mulhollen@usda.gov
Brazil	Sunita Yadav-Pauletti, Ph.D.		sunita.yadav-pauletti@usda.gov



The Foreign Agricultural Service (FAS) updates its production, supply and distribution (PSD) database for cotton, oilseeds, and grains at 12:00 p.m. on the day the *World Agricultural Supply and Demand Estimates* (WASDE) report is released. This circular is released by 12:15 p.m.

## **FAS Reports and Databases:**

### **World Agricultural Production**

Current: <https://www.fas.usda.gov/data/world-agricultural-production>

Archive: <https://usda.library.cornell.edu/concern/publications/5q47rn72z?locale=en>

USDA's Foreign Agricultural Service (FAS) publishes a monthly report on crop acreage, yield and production in major countries worldwide. Sources include reporting from FAS's worldwide offices, official statistics of foreign governments, and analysis of economic data and satellite imagery. The reports reflect official USDA estimates released in the monthly *World Agricultural Supply and Demand Estimates* (WASDE).

### **World Markets and Trade**

Current: <https://www.fas.usda.gov/data>

Archive:

[https://usda.library.cornell.edu/catalog?f%5Bmember\\_of\\_collections\\_ssim%5D%5B%5D=Foreign+Agricultural+Service&locale=en](https://usda.library.cornell.edu/catalog?f%5Bmember_of_collections_ssim%5D%5B%5D=Foreign+Agricultural+Service&locale=en)

USDA's Foreign Agricultural Service (FAS) publishes monthly and quarterly reports which include data on U.S. and global trade, production, consumption and stocks, as well as analysis of developments affecting world trade in oilseeds, grains, cotton, livestock and poultry. The reports reflect official USDA estimates released in the monthly *World Agricultural Supply and Demand Estimates* (WASDE).

### **Global Agricultural Information Network (GAIN)**

<https://www.fas.usda.gov/databases/global-agricultural-information-network-gain>

USDA's Foreign Agricultural Service (FAS) provides timely reports on foreign markets through the Global Agriculture Information Network (GAIN) database. An average of 2,000 reports are added each year, with reports going back to 1995. GAIN reports are compiled by FAS' global market intelligence network, which includes FAS foreign service officers and locally engaged staff in over 90 overseas offices world-wide. They provide on-the-ground intelligence, insight, and analysis on nearly 200 countries, delivering information on foreign agricultural markets, crop conditions, and agro-political dynamics of interest to U.S. agriculture. GAIN reports contain assessments of commodity and trade issues made by USDA staff and are not necessarily statements of official U.S. government policy.

### **Production, Supply and Distribution (PS&D) Online**

<https://apps.fas.usda.gov/psdonline/app/index.html#/app/home>

PSD Online is the public repository for USDA's Official Production, Supply and Distribution forecast data and reports for key agricultural commodities. PSD Online data are reviewed and updated monthly by an interagency committee chaired by USDA's World Agricultural Outlook Board (WAOB). The committee consist of representatives from Foreign Agricultural Service (FAS), the Economic Research Service (ERS), the Farm Service Agency (FSA), and the Agricultural Marketing Service (AMS).

### **EU Countries and Russia Wheat: Area and Production Estimates**

<https://apps.fas.usda.gov/psdonline/app/index.html#/app/downloads> (click on PSD Datasets)

USDA's Foreign Agricultural Service (FAS) provides country-level area and production estimates for the nations of the European Union. For Russia, country-level area and production estimates are provided for Winter and Spring wheat. These datasets are reviewed and updated monthly by an interagency committee chaired by USDA's World Agricultural Outlook Board (WAOB) and can be downloaded through PSD datasets on PSD Online.



## FAS Reports and Databases:

### **International Production Assessment (IPAD)**

<https://ipad.fas.usda.gov/>

USDA's Foreign Agricultural Service (FAS) maintains a dynamic global crop production portal with key information including *World Agricultural Production* (WAP) briefs, Commodity Intelligence Reports (CIR), geospatial applications, crop production maps at a subnational level and crop calendars for the top-20 producing countries. Additionally, Crop Explorer (<https://ipad.fas.usda.gov/cropexplorer/>) displays rainfall, temperature, evapotranspiration, soil moisture, snow cover, and vegetation conditions in charts and maps.

### **USDA and NASA Global Agricultural Monitoring (GLAM)**

<https://glam1.gsfc.nasa.gov/>

The USDA and NASA Global Agricultural Monitoring (GLAM) system provides near real-time and science quality Moderate Resolution Imaging Spectroradiometer (MODIS) Normalized Difference Vegetation Index (NDVI) from the satellites Terra and Aqua. The public can view and retrieve MODIS 8-day composited, global NDVI satellite imagery and time series data. GLAM was developed by NASA's Global Inventory Modeling and Mapping Studies (GIMMS) group for USDA's Foreign Agricultural Service.

### **Global Agricultural and Disaster Assessment System (GADAS)**

<https://geo.fas.usda.gov/GADAS/index.html>

USDA's Foreign Agricultural Service (FAS) provides the Global Agricultural and Disaster Assessment System (GADAS), a web-based Geographic Information System (GIS) tool which integrates a vast array of highly detailed earth observation data streams, particularly targeted towards agricultural and disaster assessment analysis. GADAS is an interactive website which provides analysts with a wide variety of routine geospatial products (maps, charts, tables) they require for comprehensive situational investigations and recurring assessments.

### **Export Sales Reporting**

<https://apps.fas.usda.gov/esrquery/>

USDA's Export Sales Reporting Program monitors U.S. agricultural export sales on a daily and weekly basis. Export sales reporting provides a constant stream of up-to-date market information for 40 U.S. agricultural commodities sold abroad. The weekly U.S. Export Sales report is the most currently available source of U.S. exports sales data. The data is used to analyze overall levels of export demand, determine where markets exit, and assess the relative position of U.S. commodities in foreign markets.

### **Global Agricultural Trade System (GATS)**

<https://apps.fas.usda.gov/gats/default.aspx>

The Global Agricultural Trade System (GATS) is a searchable database containing monthly U.S. Census Bureau trade data organized by agricultural commodity and agricultural related product groups. Trade data is searchable by partner countries and partner groups. Historical U.S. agricultural trade data is available back to 1967. In addition, U.N. trade statistics (UN Comtrade) may be queried through GATS. UN trade data is available for nearly 200 countries or areas, dating from the inception of the Harmonized System (HS) of trade codes in 1989 to present. The database is continuously updated. U.S. trade data is updated monthly according to the U.S. Census Bureau's reporting system. UN Comtrade data are updated in GATS after nationally submitted data to the UN are standardized by the UN Statistical Division and added to the UN Comtrade database.

## **Other USDA Reports:**

World Agricultural Supply and Demand Estimates (WASDE):

<http://www.usda.gov/oce/commodity/wasde/>

Economic Research Service:

<http://www.ers.usda.gov/topics/crops>

National Agricultural Statistics Service:

<http://www.nass.usda.gov/Publications/>

**Table 01 World Crop Production Summary**

Million Metric Tons

Commodity	World	Total Foreign	North America			Former Soviet		Europea n	Asia (WAP)					South America		Selected Other			All Others
			United States	Canada	Mexico	Russia	Ukraine		China	India	Indo- nesia	Paki- stan	Thai- land	Argen- tina	Brazil	Aus- tralia	South Africa	Turkey	
---Million metric tons---																			
<b>Wheat</b>																			
2018/19	730.9	679.6	51.3	32.2	3.0	71.7	25.1	nr	131.4	99.9	0.0	25.1	0.0	19.5	5.4	17.6	1.9	19.0	227.9
2019/20 prel.	764.5	711.9	52.6	32.3	3.3	73.6	29.2	nr	133.6	103.6	0.0	24.3	0.0	19.8	5.2	15.2	1.5	17.5	252.8
2020/21 proj.																			
Sep	770.5	720.5	50.0	36.0	3.1	78.0	27.0	nr	136.0	107.6	0.0	25.7	0.0	19.5	6.6	28.5	2.0	18.5	232.1
Oct	773.1	723.4	49.7	35.0	3.1	83.0	25.5	nr	136.0	107.6	0.0	25.7	0.0	19.0	6.6	28.5	2.0	18.5	232.9
<b>Coarse Grains</b>																			
2018/19	1,397.6	1,019.7	377.9	26.2	33.4	35.0	44.5	nr	264.0	43.2	12.0	6.6	5.7	59.2	104.3	11.5	12.4	13.3	348.4
2019/20 prel.	1,410.7	1,051.3	359.4	28.6	31.9	40.5	46.5	nr	268.2	47.4	12.0	7.4	4.6	58.1	105.6	10.4	16.7	14.5	358.8
2020/21 proj.																			
Sep	1,460.3	1,067.6	392.6	29.2	33.6	41.6	48.9	nr	267.4	45.1	12.0	7.5	5.5	56.4	113.4	14.3	14.6	15.8	362.4
Oct	1,458.8	1,070.6	388.2	29.6	33.6	41.9	45.7	nr	267.4	45.6	12.0	7.5	5.6	56.7	113.4	14.3	14.7	15.8	367.0
<b>Rice, Milled</b>																			
2018/19	496.7	489.6	7.1	0.0	0.2	0.7	0.0	nr	148.5	116.5	34.2	7.3	20.3	0.8	7.1	0.0	0.0	0.6	153.3
2019/20 prel.	495.8	489.9	5.9	0.0	0.2	0.7	0.0	nr	146.7	118.4	34.0	7.2	17.7	0.8	7.6	0.0	0.0	0.6	155.9
2020/21 proj.																			
Sep	499.6	492.4	7.1	0.0	0.2	0.7	0.0	nr	147.0	119.0	34.9	7.5	18.6	0.8	7.3	0.3	0.0	0.6	155.4
Oct	501.5	494.3	7.2	0.0	0.2	0.7	0.0	nr	147.0	120.0	34.9	7.6	18.6	0.8	7.5	0.3	0.0	0.6	156.1
<b>Total Grains</b>																			
2018/19	2,625.2	2,188.9	436.3	58.4	36.6	107.4	69.6	nr	543.9	259.6	46.2	39.0	26.0	79.5	116.9	29.2	14.3	32.9	729.6
2019/20 prel.	2,671.0	2,253.1	417.9	61.0	35.4	114.8	75.8	nr	548.5	269.4	46.0	38.9	22.2	78.7	118.4	25.7	18.3	32.6	767.6
2020/21 proj.																			
Sep	2,730.3	2,280.5	449.8	65.2	36.8	120.3	75.9	nr	550.4	271.7	46.9	40.7	24.1	76.7	127.3	43.1	16.6	34.9	749.9
Oct	2,733.4	2,288.3	445.1	64.6	36.8	125.6	71.2	nr	550.4	273.2	46.9	40.8	24.2	76.5	127.5	43.1	16.7	34.9	756.0
<b>Oilseeds</b>																			
2018/19	600.8	470.1	130.7	28.1	1.3	18.7	22.7	nr	60.0	35.5	14.1	3.8	1.0	60.8	124.6	3.1	2.0	3.4	91.1
2019/20 prel.	576.9	470.0	107.0	25.6	1.1	21.7	24.5	nr	63.0	36.7	14.4	3.3	1.1	53.9	131.2	2.6	2.2	3.2	85.5
2020/21 proj.																			
Sep	609.1	481.4	127.7	25.6	1.0	19.8	22.8	nr	62.2	39.3	14.6	3.4	1.1	58.5	137.7	4.0	2.1	2.9	86.4
Oct	605.5	478.9	126.6	25.5	1.0	20.1	20.8	nr	62.2	39.2	14.6	3.2	1.1	58.1	137.7	4.0	2.1	2.9	86.3
<b>Cotton</b>																			
2018/19	118.6	100.2	18.4	0.0	1.7	0.0	0.0	1.7	27.8	25.8	0.0	7.6	0.0	1.1	13.0	2.2	0.2	3.8	15.3
2019/20 prel.	121.8	101.9	19.9	0.0	1.6	0.0	0.0	2.0	27.3	29.5	0.0	6.2	0.0	1.3	13.5	0.6	0.1	3.5	16.4
2020/21 proj.																			
Sep	117.2	100.1	17.1	0.0	1.1	0.0	0.0	1.8	27.3	30.0	0.0	6.2	0.0	1.3	12.0	2.1	0.2	2.8	15.5
Oct	116.3	99.2	17.0	0.0	1.1	0.0	0.0	1.6	27.3	30.0	0.0	5.8	0.0	1.3	12.0	2.1	0.2	2.8	15.2

1/ Includes wheat, coarse grains, and rice (milled) shown above.

**Table 02 Wheat Area, Yield, and Production**

Country / Region	Area (Million hectares)				Yield (Metric tons per hectare)				Production (Million metric tons)				Change in Production			
	2018/19	Prel.	2020/21 Proj.		2018/19	Prel.	2020/21 Proj.		2018/19	Prel.	2020/21 Proj.		From last month		From last year	
		2019/20	Sep	Oct		2019/20	Sep	Oct		2019/20	Sep	Oct	MMT	Percent	MMT	Percent
<b>World</b>	215.42	217.06	222.29	222.20	3.39	3.52	3.47	3.48	730.93	764.49	770.49	773.08	2.59	0.34	8.60	1.12
<b>United States</b>	16.03	15.13	14.84	14.87	3.20	3.47	3.37	3.34	51.31	52.58	50.01	49.69	-0.32	-0.64	-2.89	-5.50
<b>Total Foreign</b>	199.39	201.93	207.45	207.33	3.41	3.53	3.47	3.49	679.62	711.90	720.48	723.39	2.91	0.40	11.49	1.61
<b>European Union - 28</b>	25.52	26.14	24.70	24.64	5.36	5.93	5.51	5.55	136.69	154.94	136.15	136.75	0.60	0.44	-18.19	-11.74
<b>China</b>	24.27	23.73	24.00	24.00	5.42	5.63	5.67	5.67	131.43	133.59	136.00	136.00	0.00	0.00	2.41	1.80
<b>South Asia</b>																
India	29.65	29.32	31.45	31.45	3.37	3.53	3.42	3.42	99.87	103.60	107.59	107.59	0.00	0.00	3.99	3.85
Pakistan	8.80	8.80	9.13	9.13	2.85	2.76	2.81	2.81	25.10	24.30	25.70	25.70	0.00	0.00	1.40	5.76
Afghanistan	2.00	2.30	2.33	2.33	1.80	2.17	2.15	2.15	3.60	5.00	5.01	5.01	0.00	0.00	0.01	0.20
Nepal	0.70	0.75	0.75	0.75	2.85	2.95	2.95	2.95	2.01	2.20	2.21	2.21	0.00	0.00	0.01	0.45
<b>Former Soviet Union - 12</b>																
Russia	26.34	27.31	28.30	28.30	2.72	2.70	2.76	2.93	71.69	73.61	78.00	83.00	5.00	6.41	9.39	12.76
Russia Winter	14.91	15.41	16.20	16.20	3.52	3.41	3.58	3.58	52.47	52.54	58.00	58.00	0.00	0.00	5.46	10.39
Russia Spring	11.44	11.91	12.10	12.10	1.68	1.77	1.65	2.07	19.22	21.07	20.00	25.00	5.00	25.00	3.93	18.65
Ukraine	6.72	7.02	6.80	6.80	3.73	4.16	3.97	3.75	25.06	29.17	27.00	25.50	-1.50	-5.56	-3.67	-12.58
Kazakhstan	11.35	11.34	11.80	11.80	1.23	1.01	1.06	1.06	13.95	11.45	12.50	12.50	0.00	0.00	1.05	9.15
Uzbekistan	1.40	1.40	1.40	1.40	4.29	4.86	4.65	4.65	6.00	6.80	6.51	6.51	0.00	0.00	-0.29	-4.26
Belarus	0.66	0.75	0.70	0.70	2.75	3.83	3.29	3.29	1.82	2.88	2.30	2.30	0.00	0.00	-0.58	-20.00
<b>Canada</b>	9.88	9.66	9.90	9.90	3.26	3.35	3.64	3.54	32.20	32.35	36.00	35.00	-1.00	-2.78	2.65	8.20
<b>South America</b>																
Argentina	6.05	6.73	6.35	6.30	3.22	2.94	3.07	3.02	19.50	19.76	19.50	19.00	-0.50	-2.56	-0.76	-3.85
Brazil	2.04	2.04	2.32	2.32	2.66	2.55	2.84	2.84	5.43	5.20	6.60	6.60	0.00	0.00	1.40	26.92
Uruguay	0.20	0.23	0.22	0.22	3.68	3.43	3.54	3.54	0.73	0.79	0.78	0.78	0.00	0.00	-0.01	-1.39
<b>Australia</b>	10.40	10.20	13.00	13.00	1.69	1.49	2.19	2.19	17.60	15.20	28.50	28.50	0.00	0.00	13.30	87.50
<b>Africa</b>																
Egypt	1.32	1.37	1.39	1.39	6.40	6.40	6.40	6.40	8.45	8.77	8.90	8.90	0.00	0.00	0.13	1.48
Morocco	2.85	2.75	2.70	2.76	2.58	1.46	1.00	0.93	7.34	4.03	2.70	2.56	-0.14	-5.19	-1.47	-36.40
Ethiopia	1.75	1.80	1.85	1.85	2.42	2.74	2.72	2.86	4.24	4.93	5.03	5.30	0.28	5.47	0.38	7.61
Algeria	2.07	2.07	2.08	2.08	1.90	1.90	1.88	1.88	3.94	3.95	3.90	3.90	0.00	0.00	-0.05	-1.27
<b>Middle East</b>																
Turkey	7.62	7.00	7.10	7.10	2.50	2.50	2.61	2.61	19.00	17.50	18.50	18.50	0.00	0.00	1.00	5.71
Iran	6.70	6.70	6.70	6.70	2.16	2.51	2.50	2.50	14.50	16.80	16.75	16.75	0.00	0.00	-0.05	-0.30
Iraq	1.70	2.40	2.40	2.40	1.76	2.00	1.93	1.93	3.00	4.80	4.64	4.64	0.00	0.00	-0.17	-3.44
Syria	1.10	1.60	1.60	1.60	1.82	3.00	2.81	2.81	2.00	4.80	4.50	4.50	0.00	0.00	-0.30	-6.25
<b>Mexico</b>	0.54	0.59	0.55	0.55	5.56	5.54	5.55	5.55	3.00	3.27	3.05	3.05	0.00	0.00	-0.22	-6.73
<b>Serbia</b>	0.65	0.57	0.57	0.57	4.92	4.39	4.74	4.74	3.20	2.50	2.70	2.70	0.00	0.00	0.20	8.00
<b>Others</b>	7.10	7.37	7.36	7.30	2.58	2.68	2.65	2.69	18.30	19.73	19.47	19.65	0.18	0.91	-0.09	-0.43

**Table 03 Total Coarse Grain Area, Yield, and Production**

Country / Region	Area (Million hectares)				Yield (Metric tons per hectare)				Production (Million metric tons)				Change in Production						
	2018/19	Prel.		2020/21 Proj.		2018/19	Prel.		2020/21 Proj.		2018/19	Prel.		2020/21 Proj.		From last month		From last year	
		2019/20	Sep	Oct	Sep		Oct	2019/20	Sep	Oct		Sep	Oct	MMT	Percent	MMT	Percent		
<b>World</b>	331.09	333.84	337.31	338.00	4.22	4.23	4.33	4.32	1,397.56	1,410.72	1,460.26	1,458.84	-1.42	-0.10	48.12	3.41			
<b>United States</b>	36.20	36.17	37.21	36.82	10.44	9.94	10.55	10.54	377.91	359.43	392.63	388.20	-4.43	-1.13	28.77	8.00			
<b>Total Foreign</b>	294.89	297.67	300.10	301.17	3.46	3.53	3.56	3.55	1,019.65	1,051.29	1,067.63	1,070.64	3.01	0.28	19.35	1.84			
<b>China</b>	44.29	43.72	44.42	44.42	5.96	6.14	6.02	6.02	263.96	268.20	267.38	267.38	0.00	0.00	-0.83	-0.31			
<b>European Union</b>	29.25	30.11	30.49	30.64	5.07	5.36	5.30	5.29	148.32	161.31	161.66	161.93	0.27	0.17	0.63	0.39			
<b>South America</b>																			
Brazil	18.72	19.77	20.78	20.78	5.57	5.34	5.46	5.46	104.33	105.57	113.41	113.41	0.00	0.00	7.83	7.42			
Argentina	8.22	8.43	7.82	7.97	7.20	6.90	7.21	7.11	59.22	58.13	56.37	56.66	0.30	0.52	-1.46	-2.51			
<b>Former Soviet Union - 12</b>																			
Russia	14.03	14.51	14.35	14.35	2.50	2.79	2.90	2.92	35.00	40.50	41.63	41.93	0.30	0.72	1.43	3.53			
Ukraine	7.58	8.22	8.51	8.51	5.87	5.67	5.75	5.37	44.50	46.55	48.90	45.70	-3.20	-6.54	-0.85	-1.83			
Kazakhstan	2.97	3.45	3.16	3.16	1.76	1.47	1.61	1.61	5.23	5.06	5.10	5.10	0.00	0.00	0.04	0.71			
Belarus	1.01	0.90	1.03	1.03	2.91	3.78	3.32	3.42	2.93	3.40	3.42	3.52	0.10	2.92	0.12	3.53			
<b>Africa</b>																			
Nigeria	14.30	14.40	14.40	14.40	1.39	1.37	1.42	1.42	19.84	19.67	20.40	20.40	0.00	0.00	0.74	3.74			
South Africa	2.81	3.13	2.92	2.93	4.43	5.35	5.01	5.00	12.42	16.75	14.63	14.66	0.03	0.21	-2.09	-12.47			
Tanzania	5.22	5.35	5.35	5.35	1.36	1.29	1.34	1.38	7.12	6.90	7.15	7.40	0.25	3.50	0.50	7.25			
Burkina	4.32	3.90	3.90	3.90	1.12	1.19	1.13	1.26	4.82	4.66	4.40	4.90	0.50	11.36	0.25	5.26			
Ethiopia	5.64	5.60	5.60	5.60	2.92	3.05	3.07	3.08	16.47	17.10	17.20	17.25	0.05	0.29	0.15	0.88			
Egypt	1.07	1.02	1.02	1.02	7.14	7.09	7.09	7.09	7.66	7.26	7.26	7.26	0.00	0.00	0.00	0.00			
Mali	4.63	4.70	4.70	4.70	1.50	1.48	1.40	1.45	6.94	6.94	6.60	6.80	0.20	3.03	-0.14	-1.95			
<b>India</b>	22.23	23.99	23.50	23.20	1.94	1.98	1.92	1.96	43.21	47.42	45.09	45.59	0.50	1.11	-1.84	-3.87			
<b>Southeast Asia</b>																			
Indonesia	3.70	3.80	3.70	3.70	3.24	3.16	3.24	3.24	12.00	12.00	12.00	12.00	0.00	0.00	0.00	0.00			
Philippines	2.48	2.51	2.60	2.60	3.07	3.20	3.15	3.15	7.61	8.03	8.20	8.20	0.00	0.00	0.17	2.12			
Vietnam	1.03	0.99	0.97	0.97	4.72	4.80	4.68	4.68	4.87	4.76	4.54	4.54	0.00	0.00	-0.22	-4.56			
Thailand	1.32	1.24	1.26	1.28	4.27	3.66	4.34	4.35	5.65	4.55	5.45	5.55	0.10	1.83	1.00	21.98			
<b>Mexico</b>	8.95	8.35	9.06	9.05	3.73	3.82	3.71	3.71	33.40	31.91	33.60	33.59	-0.01	-0.03	1.68	5.27			
<b>Canada</b>	5.00	5.55	5.59	5.64	5.24	5.16	5.22	5.25	26.20	28.62	29.17	29.60	0.43	1.47	0.97	3.40			
<b>Australia</b>	6.06	5.01	6.09	6.09	1.90	2.08	2.34	2.34	11.51	10.44	14.26	14.26	0.00	0.00	3.82	36.60			
<b>Middle East</b>																			
Turkey	4.34	4.53	4.61	4.61	3.05	3.19	3.43	3.43	13.25	14.45	15.81	15.81	0.00	0.00	1.36	9.41			
Iran	1.73	1.91	1.91	1.91	2.32	2.63	2.71	2.71	4.02	5.02	5.17	5.17	0.00	0.00	0.15	2.99			
<b>Others</b>	73.97	72.59	72.38	73.38	1.61	1.60	1.64	1.66	119.18	116.13	118.87	122.07	3.19	2.69	5.94	5.11			

World and Selected Countries and Regions; Coarse Grain includes: Barley, Corn, Millet, Mixed Grains, Oats, Rye and Sorghum

**Table 04 Corn Area, Yield, and Production**

Country / Region	Area (Million hectares)				Yield (Metric tons per hectare)				Production (Million metric tons)				Change in Production			
	2018/19	Prel.	2020/21 Proj.		2018/19	Prel.	2020/21 Proj.		2018/19	Prel.	2020/21 Proj.		From last month		From last year	
		2019/20	Sep	Oct		2019/20	Sep	Oct		2019/20	Sep	Oct	MMT	Percent	MMT	Percent
<b>World</b>	192.08	193.25	196.76	196.73	5.85	5.78	5.91	5.89	1,123.37	1,116.34	1,162.38	1,158.82	-3.56	-0.31	42.48	3.80
<b>United States</b>	32.89	32.92	33.78	33.40	11.07	10.51	11.20	11.20	364.26	345.96	378.47	373.95	-4.52	-1.19	27.99	8.09
<b>Total Foreign</b>	159.19	160.33	162.98	163.33	4.77	4.80	4.81	4.81	759.11	770.38	783.91	784.87	0.95	0.12	14.49	1.88
<b>China</b>	42.13	41.28	42.00	42.00	6.10	6.32	6.19	6.19	257.17	260.78	260.00	260.00	0.00	0.00	-0.78	-0.30
<b>South America</b>																
Brazil	17.50	18.50	19.50	19.50	5.77	5.51	5.64	5.64	101.00	102.00	110.00	110.00	0.00	0.00	8.00	7.84
Argentina	6.10	6.30	6.20	6.20	8.36	8.10	8.06	8.06	51.00	51.00	50.00	50.00	0.00	0.00	-1.00	-1.96
Bolivia	0.47	0.48	0.50	0.50	2.11	2.39	2.40	2.40	0.99	1.15	1.20	1.20	0.00	0.00	0.06	4.80
<b>European Union</b>	8.28	8.88	9.00	8.99	7.78	7.51	7.37	7.35	64.41	66.68	66.30	66.10	-0.20	-0.30	-0.58	-0.87
<b>Africa</b>																
South Africa	2.60	2.91	2.70	2.70	4.55	5.58	5.19	5.19	11.82	16.25	14.00	14.00	0.00	0.00	-2.25	-13.85
Nigeria	6.50	6.50	6.50	6.50	1.69	1.69	1.77	1.77	11.00	11.00	11.50	11.50	0.00	0.00	0.50	4.55
Ethiopia	2.30	2.30	2.30	2.30	3.63	3.70	3.74	3.74	8.35	8.50	8.60	8.60	0.00	0.00	0.10	1.18
Egypt	0.85	0.80	0.80	0.80	8.00	8.00	8.00	8.00	6.80	6.40	6.40	6.40	0.00	0.00	0.00	0.00
Tanzania	4.10	4.20	4.20	4.20	1.46	1.39	1.43	1.50	5.99	5.82	6.00	6.30	0.30	5.00	0.48	8.25
Malawi	1.69	1.70	1.70	1.70	1.60	1.78	2.22	2.22	2.70	3.03	3.78	3.78	0.00	0.00	0.75	24.75
Zambia	1.09	0.84	1.29	1.29	2.21	2.38	2.62	2.62	2.40	2.00	3.39	3.39	0.00	0.00	1.38	69.01
Kenya	2.14	2.00	2.00	2.00	1.87	1.90	1.70	2.00	4.01	3.80	3.40	4.00	0.60	17.65	0.20	5.26
Uganda	1.13	1.15	1.15	1.15	2.30	2.24	2.43	2.43	2.60	2.58	2.80	2.80	0.00	0.00	0.23	8.74
Zimbabwe	1.72	1.62	1.50	1.58	0.99	0.48	0.61	0.57	1.70	0.78	0.91	0.91	0.00	0.00	0.13	16.86
<b>Former Soviet Union - 12</b>																
Ukraine	4.57	4.99	5.40	5.40	7.84	7.19	7.13	6.76	35.81	35.89	38.50	36.50	-2.00	-5.19	0.61	1.71
Russia	2.37	2.50	2.75	2.75	4.81	5.70	5.45	5.45	11.42	14.28	15.00	15.00	0.00	0.00	0.73	5.08
<b>South Asia</b>																
India	9.03	9.72	9.20	9.20	3.07	2.95	3.04	3.04	27.72	28.64	28.00	28.00	0.00	0.00	-0.64	-2.22
Pakistan	1.32	1.33	1.39	1.39	4.62	5.19	5.05	5.05	6.10	6.90	7.00	7.00	0.00	0.00	0.10	1.45
Nepal	0.96	0.96	0.97	0.97	2.84	2.76	2.82	2.82	2.71	2.65	2.72	2.72	0.00	0.00	0.07	2.64
<b>Southeast Asia</b>																
Indonesia	3.70	3.80	3.70	3.70	3.24	3.16	3.24	3.24	12.00	12.00	12.00	12.00	0.00	0.00	0.00	0.00
Philippines	2.48	2.51	2.60	2.60	3.07	3.20	3.15	3.15	7.61	8.03	8.20	8.20	0.00	0.00	0.17	2.12
Vietnam	1.03	0.99	0.97	0.97	4.72	4.80	4.68	4.68	4.87	4.76	4.54	4.54	0.00	0.00	-0.22	-4.56
Thailand	1.30	1.22	1.23	1.25	4.32	3.70	4.39	4.40	5.60	4.50	5.40	5.50	0.10	1.85	1.00	22.22
<b>Mexico</b>	7.20	6.62	7.30	7.30	3.83	4.00	3.84	3.84	27.60	26.50	28.00	28.00	0.00	0.00	1.50	5.66
<b>Canada</b>	1.43	1.45	1.40	1.40	9.70	9.24	10.00	10.00	13.89	13.40	14.00	14.00	0.00	0.00	0.60	4.45
<b>Turkey</b>	0.53	0.52	0.60	0.60	10.75	11.54	11.42	11.42	5.70	6.00	6.85	6.85	0.00	0.00	0.85	14.17
<b>Others</b>	24.68	24.25	24.14	24.40	2.68	2.68	2.71	2.77	66.15	65.08	65.43	67.58	2.15	3.29	2.50	3.85

World and Selected Countries and Regions



**Table 05 Barley Area, Yield, and Production**

Country / Region	Area (Million hectares)				Yield (Metric tons per hectare)				Production (Million metric tons)				Change in Production			
	2018/19	Prel.	2020/21 Proj.		2018/19	Prel.	2020/21 Proj.		2018/19	Prel.	2020/21 Proj.		From last month		From last year	
		2019/20	Sep	Oct		2019/20	Sep	Oct		2019/20	Sep	Oct	MMT	Percent	MMT	Percent
<b>World</b>	48.83	51.79	50.81	51.31	2.85	3.02	3.09	3.05	139.36	156.41	156.98	156.75	-0.23	-0.14	0.34	0.22
<b>United States</b>	0.80	0.90	0.90	0.86	4.17	4.18	4.24	4.17	3.34	3.76	3.83	3.60	-0.23	-6.01	-0.16	-4.15
<b>Total Foreign</b>	48.03	50.89	49.91	50.45	2.83	3.00	3.07	3.04	136.02	152.66	153.15	153.15	0.01	0.00	0.50	0.32
<b>European Union</b>	12.32	12.37	12.62	12.73	4.54	5.09	5.02	5.00	55.98	63.00	63.30	63.70	0.40	0.63	0.70	1.11
<b>Former Soviet Union - 12</b>																
Russia	7.78	8.40	8.00	8.00	2.15	2.37	2.54	2.58	16.74	19.94	20.30	20.60	0.30	1.48	0.66	3.32
Ukraine	2.57	2.78	2.60	2.60	2.96	3.42	3.54	3.08	7.60	9.53	9.20	8.00	-1.20	-13.04	-1.53	-16.04
Kazakhstan	2.52	2.98	2.70	2.70	1.58	1.29	1.41	1.41	3.97	3.83	3.80	3.80	0.00	0.00	-0.03	-0.78
Belarus	0.43	0.40	0.38	0.38	2.20	3.50	2.76	2.76	0.94	1.40	1.05	1.05	0.00	0.00	-0.35	-25.00
Azerbaijan	0.34	0.32	0.31	0.31	2.72	2.72	2.74	2.74	0.92	0.87	0.85	0.85	0.00	0.00	-0.02	-2.30
<b>Canada</b>	2.40	2.73	2.70	2.75	3.50	3.81	3.74	3.78	8.38	10.38	10.10	10.40	0.30	2.97	0.02	0.16
<b>Australia</b>	4.44	4.05	4.40	4.40	1.99	2.22	2.39	2.39	8.82	9.00	10.50	10.50	0.00	0.00	1.50	16.67
<b>Middle East</b>																
Turkey	3.60	3.80	3.80	3.80	1.94	2.08	2.21	2.21	7.00	7.90	8.40	8.40	0.00	0.00	0.50	6.33
Iran	1.55	1.70	1.70	1.70	1.81	2.12	2.21	2.21	2.80	3.60	3.75	3.75	0.00	0.00	0.15	4.17
Iraq	0.60	1.20	1.20	1.20	1.30	1.33	1.29	1.29	0.78	1.60	1.55	1.55	0.00	0.00	-0.05	-3.13
Syria	0.80	1.50	1.50	1.50	0.50	1.33	1.27	1.27	0.40	2.00	1.90	1.90	0.00	0.00	-0.10	-5.00
<b>Africa</b>																
Ethiopia	1.00	1.00	1.00	1.00	2.20	2.30	2.30	2.35	2.20	2.30	2.30	2.35	0.05	2.17	0.05	2.17
Morocco	1.60	1.45	1.10	1.47	1.82	0.80	0.55	0.44	2.91	1.16	0.60	0.64	0.04	6.67	-0.52	-44.88
Algeria	1.03	1.03	1.03	1.03	1.90	1.95	1.80	1.80	1.95	2.00	1.85	1.85	0.00	0.00	-0.16	-7.75
Tunisia	0.31	0.47	0.42	0.42	0.99	1.94	1.60	1.60	0.31	0.91	0.66	0.66	0.00	0.00	-0.25	-27.19
South Africa	0.12	0.13	0.13	0.14	3.55	2.61	3.62	3.57	0.42	0.35	0.47	0.50	0.03	6.38	0.16	44.93
<b>South America</b>																
Argentina	1.20	1.12	0.85	0.85	4.22	3.39	4.06	4.06	5.06	3.80	3.45	3.45	0.00	0.00	-0.35	-9.21
Uruguay	0.17	0.16	0.17	0.17	3.87	3.75	3.70	3.70	0.64	0.60	0.61	0.61	0.00	0.00	0.01	1.67
Brazil	0.11	0.12	0.12	0.12	3.16	3.61	3.21	3.21	0.35	0.43	0.39	0.39	0.00	0.00	-0.04	-10.26
<b>India</b>	0.66	0.58	0.60	0.60	2.69	2.84	2.80	2.80	1.78	1.63	1.69	1.69	0.00	0.00	0.05	3.31
<b>China</b>	0.26	0.26	0.26	0.26	3.64	3.46	3.46	3.46	0.96	0.90	0.90	0.90	0.00	0.00	0.00	0.00
<b>Mexico</b>	0.35	0.36	0.36	0.36	2.82	2.81	2.80	2.80	1.00	1.01	1.00	1.00	0.00	0.00	-0.01	-0.99
<b>Afghanistan</b>	0.08	0.18	0.17	0.17	0.68	1.39	1.41	1.41	0.06	0.25	0.24	0.24	0.00	0.00	-0.01	-4.00
<b>Others</b>	1.80	1.81	1.81	1.81	2.26	2.36	2.37	2.42	4.06	4.27	4.29	4.38	0.09	1.98	0.11	2.62

World and Selected Countries and Regions

**Table 06 Oats Area, Yield, and Production**

Country / Region	Area (Million hectares)				Yield (Metric tons per hectare)				Production (Million metric tons)				Change in Production			
	2018/19	Prel.	2020/21 Proj.		2018/19	Prel.	2020/21 Proj.		2018/19	Prel.	2020/21 Proj.		From last month		From last year	
		2019/20	Sep	Oct		2019/20	Sep	Oct		2019/20	Sep	Oct	MMT	Percent	MMT	Percent
<b>World</b>	9.99	9.55	9.69	9.83	2.23	2.39	2.45	2.46	22.24	22.83	23.72	24.15	0.44	1.83	1.32	5.80
<b>United States</b>	0.35	0.34	0.40	0.41	2.33	2.31	2.33	2.34	0.82	0.77	0.94	0.95	0.01	0.74	0.18	22.77
<b>Total Foreign</b>	9.64	9.21	9.28	9.42	2.22	2.39	2.45	2.46	21.43	22.06	22.78	23.21	0.43	1.88	1.15	5.20
<b>European Union</b>	2.73	2.53	2.60	2.63	2.86	3.09	3.10	3.10	7.79	7.81	8.08	8.15	0.07	0.90	0.34	4.31
<b>Former Soviet Union - 12</b>																
Russia	2.73	2.43	2.25	2.25	1.73	1.82	1.78	1.78	4.72	4.42	4.00	4.00	0.00	0.00	-0.42	-9.50
Ukraine	0.20	0.18	0.20	0.20	2.14	2.32	2.31	2.31	0.42	0.43	0.45	0.45	0.00	0.00	0.02	5.39
Belarus	0.15	0.15	0.15	0.15	2.26	3.00	2.47	2.47	0.34	0.45	0.37	0.37	0.00	0.00	-0.08	-17.78
Kazakhstan	0.24	0.24	0.23	0.23	1.43	1.10	1.33	1.33	0.34	0.27	0.30	0.30	0.00	0.00	0.03	12.36
<b>Canada</b>	1.01	1.17	1.26	1.25	3.42	3.62	3.49	3.60	3.44	4.24	4.40	4.50	0.10	2.27	0.26	6.21
<b>South America</b>																
Argentina	0.24	0.32	0.15	0.29	2.40	1.86	2.50	2.25	0.57	0.60	0.38	0.64	0.27	70.67	0.04	6.67
Brazil	0.38	0.40	0.40	0.40	2.11	2.21	2.28	2.28	0.80	0.88	0.91	0.91	0.00	0.00	0.03	3.53
Chile	0.08	0.10	0.11	0.11	5.13	4.92	5.60	5.60	0.39	0.48	0.64	0.64	0.00	0.00	0.16	33.75
Uruguay	0.03	0.01	0.02	0.02	2.04	1.86	2.00	2.00	0.05	0.03	0.04	0.04	0.00	0.00	0.01	53.85
<b>Oceania</b>																
Australia	0.94	0.70	0.95	0.95	1.21	1.23	1.68	1.68	1.14	0.86	1.60	1.60	0.00	0.00	0.74	86.05
New Zealand	0.01	0.01	0.01	0.01	5.00	5.50	5.50	5.50	0.03	0.03	0.03	0.03	0.00	0.00	0.00	0.00
<b>China</b>	0.50	0.53	0.53	0.53	1.15	1.19	1.19	1.19	0.58	0.63	0.63	0.63	0.00	0.00	0.00	0.00
<b>Africa</b>																
Algeria	0.09	0.09	0.09	0.09	1.29	1.29	1.29	1.29	0.11	0.11	0.11	0.11	0.00	0.00	0.00	0.00
Morocco	0.05	0.05	0.04	0.04	1.40	0.89	0.88	0.88	0.06	0.04	0.04	0.04	0.00	0.00	-0.01	-12.50
South Africa	0.02	0.02	0.02	0.02	1.65	0.76	1.50	1.50	0.03	0.02	0.03	0.03	0.00	0.00	0.01	87.50
<b>Other Europe</b>																
Norway	0.07	0.07	0.07	0.07	2.09	4.29	4.29	4.29	0.14	0.30	0.30	0.30	0.00	0.00	0.00	0.00
Serbia	0.03	0.03	0.03	0.03	2.17	2.17	2.17	2.17	0.07	0.07	0.07	0.07	0.00	0.00	0.00	0.00
Albania	0.01	0.01	0.01	0.01	2.08	2.14	2.14	2.14	0.03	0.03	0.03	0.03	0.00	0.00	0.00	0.00
Bosnia and Herzegovina	0.01	0.01	0.01	0.01	2.79	1.93	2.56	2.56	0.04	0.03	0.02	0.02	0.00	0.00	0.00	-14.81
<b>Turkey</b>	0.10	0.10	0.10	0.10	2.30	2.30	2.40	2.40	0.23	0.23	0.24	0.24	0.00	0.00	0.01	4.35
<b>Mexico</b>	0.05	0.05	0.05	0.05	2.06	1.98	2.00	2.00	0.10	0.10	0.10	0.09	-0.01	-10.00	-0.01	-9.09
<b>Others</b>	0.02	0.01	0.01	0.01	2.00	1.86	1.86	1.86	0.03	0.03	0.03	0.03	0.00	0.00	0.00	0.00

World and Selected Countries and Regions

**Table 07 Rye Area, Yield, and Production**

Country / Region	Area (Million hectares)				Yield (Metric tons per hectare)				Production (Million metric tons)				Change in Production			
	2018/19	Prel.	2020/21 Proj.		2018/19	Prel.	2020/21 Proj.		2018/19	Prel.	2020/21 Proj.		From last month		From last year	
		2019/20	Sep	Oct		2019/20	Sep	Oct		2019/20	Sep	Oct	MMT	Percent	MMT	Percent
<b>World</b>	3.74	3.91	4.17	4.17	2.68	3.11	3.13	3.15	10.01	12.17	13.07	13.13	0.05	0.40	0.96	7.86
<b>United States</b>	0.11	0.13	0.16	0.13	1.95	2.16	1.91	2.19	0.21	0.27	0.30	0.29	-0.01	-3.62	0.02	8.52
<b>Total Foreign</b>	3.63	3.78	4.01	4.04	2.70	3.15	3.18	3.18	9.80	11.90	12.77	12.83	0.06	0.49	0.93	7.85
<b>European Union</b>	1.92	2.21	2.20	2.20	3.24	3.83	3.93	3.93	6.22	8.45	8.65	8.65	0.00	0.03	0.20	2.39
<b>Former Soviet Union - 12</b>																
Russia	0.96	0.82	0.95	0.95	2.00	1.73	1.89	1.89	1.91	1.42	1.80	1.80	0.00	0.00	0.38	26.40
Belarus	0.25	0.20	0.30	0.30	2.00	3.25	3.00	3.00	0.50	0.65	0.90	0.90	0.00	0.00	0.25	38.46
Ukraine	0.15	0.12	0.14	0.14	2.66	2.90	2.96	2.96	0.40	0.34	0.40	0.40	0.00	0.00	0.06	17.99
Kazakhstan	0.02	0.02	0.02	0.02	1.05	1.00	1.00	1.00	0.02	0.02	0.02	0.02	0.00	0.00	0.00	-13.04
<b>Turkey</b>	0.11	0.11	0.11	0.11	2.91	2.91	2.91	2.91	0.32	0.32	0.32	0.32	0.00	0.00	0.00	0.00
<b>Canada</b>	0.08	0.10	0.14	0.15	2.99	3.23	2.96	2.97	0.24	0.33	0.40	0.43	0.03	7.50	0.10	29.13
<b>South America</b>																
Chile	0.00	0.00	0.00	0.00	5.00	5.00	5.00	5.00	0.01	0.01	0.01	0.01	0.00	0.00	0.00	0.00
Argentina	0.05	0.11	0.07	0.09	1.78	2.04	2.00	2.00	0.09	0.22	0.14	0.17	0.03	21.43	-0.05	-22.73
<b>Other Europe</b>																
Bosnia and Herzegovina	0.00	0.00	0.00	0.00	2.75	2.50	3.33	3.33	0.01	0.01	0.01	0.01	0.00	0.00	0.00	0.00
Switzerland	0.00	0.00	0.00	0.00	5.50	5.50	5.50	5.50	0.01	0.01	0.01	0.01	0.00	0.00	0.00	0.00
Serbia	0.00	0.00	0.00	0.00	2.50	2.50	2.50	2.50	0.01	0.01	0.01	0.01	0.00	0.00	0.00	0.00
<b>Australia</b>	0.04	0.04	0.04	0.04	0.68	0.68	0.68	0.68	0.03	0.03	0.03	0.03	0.00	0.00	0.00	0.00
<b>Others</b>	0.03	0.04	0.04	0.04	1.00	1.92	1.90	1.90	0.03	0.07	0.07	0.07	0.00	0.00	0.00	1.37

World and Selected Countries and Regions

**Table 08 Sorghum Area, Yield, and Production**

Country / Region	Area (Million hectares)				Yield (Metric tons per hectare)				Production (Million metric tons)				Change in Production			
	Prel.		2020/21 Proj.		Prel.		2020/21 Proj.		Prel.		2020/21 Proj.		From last month		From last year	
	2018/19	2019/20	Sep	Oct	2018/19	2019/20	Sep	Oct	2018/19	2019/20	Sep	Oct	MMT	Percent	MMT	Percent
<b>World</b>	40.74	40.46	41.02	41.36	1.45	1.43	1.47	1.48	59.24	57.97	60.33	61.35	1.02	1.70	3.38	5.83
<b>United States</b>	2.05	1.89	1.96	2.02	4.53	4.58	4.64	4.65	9.27	8.67	9.09	9.41	0.32	3.54	0.74	8.53
<b>Total Foreign</b>	38.70	38.57	39.06	39.33	1.29	1.28	1.31	1.32	49.97	49.30	51.24	51.94	0.70	1.37	2.64	5.36
<b>Africa</b>																
Nigeria	5.80	5.90	5.90	5.90	1.16	1.13	1.17	1.17	6.72	6.67	6.90	6.90	0.00	0.00	0.24	3.53
Ethiopia	1.83	1.85	1.85	1.85	2.70	2.81	2.81	2.81	4.93	5.20	5.20	5.20	0.00	0.00	0.00	0.00
Sudan	7.11	7.00	7.00	7.00	0.70	0.57	0.71	0.71	4.95	4.00	5.00	5.00	0.00	0.00	1.00	25.00
Burkina	1.91	1.80	1.80	1.80	1.01	1.04	1.00	1.06	1.93	1.87	1.80	1.90	0.10	5.56	0.03	1.60
Mali	1.35	1.50	1.50	1.50	1.09	1.00	1.00	1.00	1.47	1.50	1.50	1.50	0.00	0.00	0.00	0.00
Niger	3.90	3.70	3.70	3.70	0.54	0.53	0.51	0.51	2.10	1.97	1.90	1.90	0.00	0.00	-0.07	-3.55
Cameroon	0.87	0.85	0.85	0.85	1.63	1.41	1.41	1.65	1.42	1.20	1.20	1.40	0.20	16.67	0.20	16.67
Tanzania	0.79	0.80	0.80	0.80	1.02	0.91	1.00	0.94	0.81	0.73	0.80	0.75	-0.05	-6.25	0.02	2.74
Egypt	0.14	0.14	0.14	0.14	5.36	5.36	5.36	5.36	0.75	0.75	0.75	0.75	0.00	0.00	0.00	0.00
Uganda	0.45	0.41	0.41	0.41	0.67	0.98	0.98	0.98	0.30	0.40	0.40	0.40	0.00	0.00	0.00	0.00
Ghana	0.28	0.25	0.25	0.25	1.12	1.38	1.12	1.12	0.32	0.35	0.28	0.28	0.00	0.00	-0.07	-18.84
Mozambique	0.25	0.30	0.30	0.30	1.18	1.08	0.67	0.97	0.30	0.33	0.20	0.29	0.09	45.00	-0.04	-10.77
South Africa	0.05	0.05	0.05	0.05	2.70	2.96	2.50	2.50	0.14	0.13	0.13	0.13	0.00	0.00	-0.01	-6.02
<b>Mexico</b>	1.35	1.32	1.35	1.35	3.48	3.26	3.33	3.33	4.70	4.30	4.50	4.50	0.00	0.00	0.20	4.65
<b>South America</b>																
Argentina	0.63	0.58	0.55	0.55	3.97	4.35	4.36	4.36	2.50	2.50	2.40	2.40	0.00	0.00	-0.10	-4.00
Brazil	0.73	0.75	0.75	0.75	2.97	3.03	2.80	2.80	2.18	2.25	2.10	2.10	0.00	0.00	-0.15	-6.83
<b>South Asia</b>																
India	4.09	4.71	4.80	4.80	0.85	1.00	0.92	0.92	3.48	4.73	4.40	4.40	0.00	0.00	-0.33	-7.04
Pakistan	0.24	0.24	0.25	0.25	0.59	0.58	0.58	0.58	0.14	0.14	0.15	0.15	0.00	0.00	0.01	3.57
<b>China</b>	0.62	0.75	0.73	0.73	4.70	4.80	4.86	4.86	2.91	3.60	3.55	3.55	0.00	0.00	-0.05	-1.39
<b>Australia</b>	0.55	0.15	0.60	0.60	2.11	2.00	2.83	2.83	1.16	0.30	1.70	1.70	0.00	0.00	1.40	466.67
<b>European Union</b>	0.13	0.16	0.17	0.20	5.70	5.34	5.53	5.33	0.75	0.88	0.94	1.06	0.12	12.34	0.18	20.55
<b>Others</b>	5.64	5.37	5.31	5.56	1.07	1.03	1.03	1.02	6.03	5.51	5.45	5.69	0.25	4.52	0.19	3.40

World and Selected Countries and Regions

**Table 09 Rice Area, Yield, and Production**  
**World and Selected Countries and Regions**

Country / Region	Area (Million hectares)				Yield (Metric tons per hectare)				Production (Million metric tons)				Change in Production			
	Prel.		2020/21 Proj.		Prel.		2020/21 Proj.		Prel.		2020/21 Proj.		From last month		From last year	
	2018/19	2019/20	Sep	Oct	2018/19	2019/20	Sep	Oct	2018/19	2019/20	Sep	Oct	MMT	Percent	MMT	Percent
<b>World</b>	162.41	160.29	162.37	162.34	4.56	4.62	4.59	4.61	496.71	495.78	499.58	501.47	1.90	0.38	5.69	1.15
<b>United States</b>	1.18	1.00	1.21	1.21	8.62	8.38	8.44	8.48	7.11	5.86	7.14	7.19	0.04	0.60	1.32	22.54
<b>Total Foreign</b>	161.23	159.29	161.16	161.13	4.53	4.59	4.56	4.58	489.60	489.92	492.43	494.29	1.85	0.38	4.37	0.89
<b>East Asia</b>																
China	30.19	29.69	29.80	29.80	7.03	7.06	7.05	7.05	148.49	146.73	147.00	147.00	0.00	0.00	0.27	0.18
Japan	1.55	1.54	1.54	1.54	6.79	6.78	6.82	6.82	7.66	7.61	7.65	7.62	-0.03	-0.39	0.01	0.12
Korea, South	0.74	0.73	0.73	0.73	6.99	6.84	7.06	7.06	3.87	3.74	3.86	3.86	0.00	0.00	0.11	3.02
Korea, North	0.50	0.50	0.50	0.50	4.18	4.18	4.18	4.18	1.36	1.36	1.36	1.36	0.00	0.00	0.00	0.00
<b>South Asia</b>																
India	44.16	43.78	44.50	44.50	3.96	4.06	4.01	4.05	116.48	118.43	119.00	120.00	1.00	0.84	1.57	1.33
Bangladesh	11.77	11.83	11.80	11.80	4.45	4.55	4.58	4.58	34.91	35.85	36.00	36.00	0.00	0.00	0.15	0.41
Pakistan	2.88	3.00	3.00	3.00	3.80	3.60	3.75	3.80	7.30	7.20	7.50	7.60	0.10	1.33	0.40	5.56
Nepal	1.49	1.46	1.49	1.49	3.76	3.80	3.70	3.70	3.74	3.70	3.68	3.68	0.00	0.00	-0.02	-0.60
Sri Lanka	0.98	0.95	0.98	0.98	4.72	4.85	4.52	4.52	3.13	3.13	3.04	3.04	0.00	0.00	-0.09	-2.94
<b>Southeast Asia</b>																
Indonesia	11.50	11.20	11.50	11.50	4.68	4.78	4.78	4.78	34.20	34.00	34.90	34.90	0.00	0.00	0.90	2.65
Vietnam	7.54	7.47	7.40	7.40	5.80	5.82	5.84	5.84	27.34	27.15	27.00	27.00	0.00	0.00	-0.15	-0.55
Thailand	10.83	9.89	10.30	10.30	2.85	2.70	2.74	2.74	20.34	17.66	18.60	18.60	0.00	0.00	0.95	5.35
Burma	7.08	6.90	7.05	7.00	2.91	2.88	2.88	2.88	13.20	12.70	13.00	12.90	-0.10	-0.77	0.20	1.57
Philippines	4.74	4.64	4.45	4.55	3.93	4.08	3.92	4.08	11.73	11.93	11.00	11.70	0.70	6.36	-0.23	-1.90
Cambodia	3.24	3.26	3.28	3.28	2.91	2.89	2.89	2.89	5.74	5.74	5.78	5.78	0.00	0.00	0.04	0.70
Laos	0.86	0.97	0.98	0.98	3.12	3.19	3.24	3.24	1.68	1.95	2.00	2.00	0.00	0.00	0.05	2.56
Malaysia	0.70	0.70	0.70	0.70	4.01	4.01	4.01	4.01	1.83	1.83	1.83	1.83	0.00	0.00	0.00	0.00
<b>South America</b>																
Brazil	1.70	1.67	1.70	1.72	6.18	6.71	6.35	6.40	7.14	7.60	7.34	7.48	0.14	1.85	-0.12	-1.60
Peru	0.44	0.42	0.42	0.42	8.12	7.57	7.62	7.62	2.46	2.20	2.22	2.22	0.00	0.00	0.02	0.68
<b>Africa</b>																
Egypt	0.46	0.76	0.76	0.70	8.78	8.20	8.20	8.28	2.80	4.30	4.30	4.00	-0.30	-6.98	-0.30	-6.98
Madagascar	1.50	1.50	1.50	1.50	2.69	2.80	2.67	2.67	2.58	2.69	2.56	2.56	0.00	0.00	-0.13	-4.76
Nigeria	3.35	3.50	3.50	3.50	2.15	2.29	2.29	2.29	4.54	5.04	5.04	5.04	0.00	0.00	0.00	0.00
<b>European Union</b>	0.41	0.42	0.42	0.42	6.86	6.84	6.78	6.78	1.97	1.98	1.99	1.99	0.00	0.00	0.01	0.30
<b>Iran</b>	0.58	0.58	0.58	0.58	5.25	5.25	5.27	5.27	1.99	1.99	2.00	2.00	0.00	0.00	0.01	0.35
<b>Others</b>	12.05	11.95	12.29	12.25	2.91	2.98	2.94	2.99	23.14	23.42	23.81	24.16	0.35	1.46	0.73	3.13

Yield is on a rough basis, before the milling process. Production is on a milled basis, after the milling process.

**Table 10 Total Oilseed Area, Yield, and Production**  
**World and Selected Countries and Regions**

Country / Region	Area (Million hectares)				Yield (Metric tons per hectare)				Production (Million metric tons)				Change in Production			
	Prel.		2020/21 Proj.		Prel.		2020/21 Proj.		Prel.		2020/21 Proj.		From last month		From last year	
	2018/19	2019/20	Sep	Oct	2018/19	2019/20	Sep	Oct	2018/19	2019/20	Sep	Oct	MMT	Percent	MMT	Percent
<b>World Total</b>	--	--	--	--	--	--	--	--	600.82	576.95	609.15	605.50	-3.65	-0.60	28.55	4.95
<b>Total Foreign</b>	--	--	--	--	--	--	--	--	470.11	469.97	481.43	478.85	-2.58	-0.53	8.89	1.89
<b>Oilseed, Copra</b>	--	--	--	--	--	--	--	--	5.98	5.86	5.77	5.77	0.00	0.00	-0.09	-1.59
<b>Oilseed, Palm Kernel</b>	--	--	--	--	--	--	--	--	20.17	20.00	20.38	20.48	0.10	0.49	0.48	2.42
<b>Major Oilseeds</b>	248.21	245.05	249.81	248.93	2.32	2.25	2.33	2.33	574.67	551.09	583.00	579.25	-3.75	-0.64	28.16	5.11
<b>United States</b>	41.33	36.87	39.24	39.00	3.16	2.90	3.25	3.25	130.72	106.98	127.72	126.65	-1.08	-0.84	19.67	18.38
<b>Foreign Oilseeds</b>	206.88	208.17	210.57	209.93	2.15	2.13	2.16	2.16	443.96	444.11	455.28	452.60	-2.68	-0.59	8.49	1.91
<b>South America</b>	63.20	64.05	66.39	66.18	3.17	3.13	3.19	3.20	200.36	200.36	212.05	211.64	-0.41	-0.19	11.28	5.63
Brazil	37.75	38.77	40.36	40.36	3.30	3.38	3.41	3.41	124.49	131.09	137.54	137.54	0.00	0.00	6.45	4.92
Argentina	19.16	19.05	19.67	19.47	3.18	2.83	2.98	2.99	60.83	53.89	58.53	58.13	-0.40	-0.68	4.25	7.88
Paraguay	3.62	3.61	3.73	3.73	2.38	2.77	2.78	2.78	8.60	10.01	10.38	10.38	0.00	0.00	0.37	3.68
Bolivia	1.51	1.51	1.54	1.54	2.07	1.93	1.97	1.97	3.13	2.92	3.03	3.03	0.00	0.00	0.11	3.73
Uruguay	1.02	0.97	0.95	0.95	2.86	2.16	2.33	2.33	2.92	2.09	2.20	2.20	0.00	0.00	0.11	5.26
<b>China</b>	24.01	25.20	25.05	25.05	2.50	2.50	2.48	2.48	59.95	63.03	62.18	62.18	0.00	0.00	-0.86	-1.36
<b>South Asia</b>	39.09	41.28	42.21	42.11	1.00	0.96	1.00	1.00	39.00	39.70	42.42	42.15	-0.27	-0.65	2.44	6.16
India	35.93	37.82	38.95	38.85	0.97	0.95	0.99	0.99	34.74	35.92	38.57	38.47	-0.10	-0.26	2.55	7.11
Pakistan	2.80	3.09	2.90	2.90	1.36	1.08	1.17	1.11	3.81	3.33	3.40	3.22	-0.17	-5.12	-0.11	-3.30
<b>European Union</b>	12.24	11.14	11.07	11.05	2.68	2.67	2.70	2.69	32.78	29.78	29.91	29.76	-0.15	-0.50	-0.01	-0.05
<b>Former Soviet Union - 12</b>	25.62	26.10	25.30	25.30	1.80	1.96	1.86	1.80	46.11	51.13	47.16	45.43	-1.73	-3.67	-5.69	-11.13
Russia	12.18	12.56	12.30	12.30	1.54	1.73	1.61	1.63	18.73	21.70	19.80	20.10	0.30	1.52	-1.60	-7.39
Ukraine	9.38	9.70	9.40	9.40	2.42	2.52	2.43	2.21	22.68	24.46	22.80	20.80	-2.00	-8.77	-3.66	-14.98
Uzbekistan	1.10	1.01	0.98	0.98	1.17	1.36	1.31	1.33	1.28	1.37	1.27	1.29	0.02	1.57	-0.08	-5.90
<b>Canada</b>	11.69	10.76	10.34	10.34	2.40	2.38	2.48	2.47	28.07	25.59	25.60	25.50	-0.10	-0.39	-0.09	-0.35
<b>Africa</b>	22.10	21.56	21.42	21.10	1.03	0.96	0.97	0.99	22.81	20.80	20.87	20.86	-0.02	-0.07	0.06	0.27
Nigeria	3.77	3.66	3.79	3.79	1.38	1.17	1.24	1.25	5.19	4.29	4.70	4.75	0.05	1.02	0.46	10.83
South Africa	1.31	1.27	1.31	1.31	1.51	1.71	1.59	1.59	1.97	2.17	2.09	2.09	0.00	0.00	-0.09	-3.92
Tanzania	1.42	1.60	1.45	1.45	0.89	0.85	0.87	0.87	1.26	1.36	1.26	1.26	0.00	0.00	-0.10	-7.06
<b>Southeast Asia</b>	3.32	3.13	3.21	3.21	1.39	1.38	1.39	1.39	4.60	4.31	4.47	4.47	0.00	0.00	0.16	3.71
Indonesia	0.99	0.95	0.94	0.94	1.56	1.55	1.54	1.54	1.55	1.47	1.45	1.45	0.00	0.00	-0.03	-1.70
Burma	2.01	1.87	1.97	1.97	1.20	1.18	1.21	1.21	2.41	2.21	2.38	2.38	0.00	0.00	0.17	7.79
<b>Australia</b>	2.56	1.91	2.76	2.76	1.22	1.36	1.46	1.46	3.11	2.60	4.02	4.02	0.00	0.00	1.42	54.77
<b>Turkey</b>	1.33	1.39	1.15	1.15	2.53	2.31	2.56	2.56	3.36	3.22	2.93	2.93	0.00	0.00	-0.29	-8.85
<b>Others</b>	1.73	1.66	1.67	1.67	2.21	2.17	2.20	2.20	3.81	3.60	3.66	3.66	0.00	0.00	0.07	1.81

World Total and Total Foreign: (Major Oilseeds plus copra and palm kernel) Major Oilseeds: (soybeans, sunflowerseeds, peanuts(inshell), cottonseed and rapeseed)

**Table 11 Soybean Area, Yield, and Production**

Country / Region	Area (Million hectares)				Yield (Metric tons per hectare)				Production (Million metric tons)				Change in Production			
	2018/19	Prel.	2020/21 Proj.		2018/19	Prel.	2020/21 Proj.		2018/19	Prel.	2020/21 Proj.		From last month		From last year	
		2019/20	Sep	Oct		2019/20	Sep	Oct		2019/20	Sep	Oct	MMT	Percent	MMT	Percent
<b>World</b>	124.97	122.44	127.59	127.28	2.89	2.75	2.90	2.89	361.06	336.59	369.74	368.47	-1.27	-0.34	31.88	9.47
<b>United States</b>	35.45	30.33	33.60	33.30	3.40	3.19	3.49	3.49	120.52	96.67	117.38	116.15	-1.22	-1.04	19.49	20.16
<b>Total Foreign</b>	89.52	92.12	93.99	93.98	2.69	2.60	2.69	2.68	240.55	239.92	252.37	252.32	-0.05	-0.02	12.39	5.17
<b>South America</b>																
Brazil	35.90	36.90	38.60	38.60	3.33	3.41	3.45	3.45	119.70	126.00	133.00	133.00	0.00	0.00	7.00	5.56
Argentina	16.60	16.70	17.30	17.30	3.33	2.93	3.09	3.09	55.30	49.00	53.50	53.50	0.00	0.00	4.50	9.18
Paraguay	3.54	3.54	3.65	3.65	2.40	2.80	2.81	2.81	8.51	9.90	10.25	10.25	0.00	0.00	0.35	3.54
Bolivia	1.40	1.40	1.43	1.43	2.14	2.00	2.03	2.03	2.99	2.80	2.90	2.90	0.00	0.00	0.10	3.57
Uruguay	0.97	0.91	0.88	0.88	2.93	2.19	2.38	2.38	2.83	1.99	2.09	2.09	0.00	0.00	0.10	5.03
<b>East Asia</b>																
China	8.41	9.30	9.30	9.30	1.90	1.95	1.88	1.88	15.97	18.10	17.50	17.50	0.00	0.00	-0.60	-3.31
Korea, South	0.05	0.06	0.06	0.06	1.75	1.81	1.80	1.80	0.09	0.11	0.11	0.11	0.00	0.00	0.00	2.86
Korea, North	0.15	0.15	0.15	0.15	1.50	1.50	1.50	1.50	0.23	0.23	0.23	0.23	0.00	0.00	0.00	0.00
Japan	0.15	0.14	0.14	0.14	1.45	1.47	1.65	1.65	0.21	0.21	0.24	0.24	0.00	0.00	0.02	10.85
<b>India</b>	11.13	12.00	12.20	12.20	0.98	0.78	0.92	0.92	10.93	9.30	11.20	11.20	0.00	0.00	1.90	20.43
<b>Canada</b>	2.54	2.27	2.00	2.00	2.92	2.66	3.00	3.00	7.42	6.05	6.00	6.00	0.00	0.00	-0.05	-0.74
<b>Former Soviet Union - 12</b>																
Russia	2.74	2.78	2.70	2.70	1.47	1.57	1.59	1.59	4.03	4.36	4.30	4.30	0.00	0.00	-0.06	-1.35
Ukraine	1.88	1.96	1.50	1.50	2.58	2.29	2.20	2.20	4.83	4.50	3.30	3.30	0.00	0.00	-1.20	-26.65
<b>European Union</b>	0.92	0.92	0.94	0.93	2.91	2.85	2.99	2.97	2.67	2.62	2.80	2.75	-0.05	-1.79	0.14	5.16
<b>Southeast Asia</b>																
Indonesia	0.42	0.40	0.39	0.39	1.24	1.20	1.22	1.22	0.52	0.48	0.48	0.48	0.00	0.00	-0.01	-1.04
Vietnam	0.05	0.05	0.05	0.05	1.62	1.53	1.53	1.53	0.08	0.07	0.07	0.07	0.00	0.00	0.00	0.00
Thailand	0.04	0.03	0.03	0.03	1.57	1.53	1.63	1.63	0.06	0.05	0.05	0.05	0.00	0.00	0.00	0.00
Burma	0.14	0.14	0.14	0.14	1.04	1.04	1.04	1.04	0.15	0.15	0.14	0.14	0.00	0.00	-0.01	-3.45
<b>Serbia</b>	0.22	0.22	0.22	0.22	2.84	2.73	2.89	2.89	0.63	0.60	0.64	0.64	0.00	0.00	0.04	5.83
<b>Mexico</b>	0.19	0.15	0.20	0.20	1.75	1.57	1.74	1.74	0.34	0.24	0.35	0.35	0.00	0.00	0.11	48.09
<b>Africa</b>																
South Africa	0.73	0.71	0.72	0.72	1.60	1.79	1.81	1.81	1.17	1.26	1.30	1.30	0.00	0.00	0.04	3.17
Nigeria	0.70	0.71	0.72	0.72	0.96	0.99	0.97	0.97	0.67	0.70	0.70	0.70	0.00	0.00	0.00	0.00
Zambia	0.19	0.20	0.19	0.19	1.58	1.43	1.50	1.50	0.30	0.28	0.29	0.29	0.00	0.00	0.00	1.42
Uganda	0.05	0.05	0.05	0.05	0.60	0.60	0.60	0.60	0.03	0.03	0.03	0.03	0.00	0.00	0.00	0.00
<b>Middle East</b>																
Iran	0.07	0.07	0.07	0.07	2.29	2.43	2.41	2.41	0.16	0.17	0.17	0.17	0.00	0.00	0.00	-0.59
Turkey	0.03	0.03	0.03	0.03	3.80	3.89	3.79	3.79	0.10	0.11	0.11	0.11	0.00	0.00	0.01	4.76
<b>Others</b>	0.33	0.34	0.34	0.34	2.01	1.89	1.89	1.89	0.66	0.64	0.64	0.64	0.00	0.00	0.00	0.00

World and Selected Countries and Regions

**Table 12 Cottonseed Area, Yield, and Production**

Country / Region	Area (Million hectares)				Yield (Metric tons per hectare)				Production (Million metric tons)				Change in Production			
	Prel.		2020/21 Proj.		Prel.		2020/21 Proj.		Prel.		2020/21 Proj.		From last month		From last year	
	2018/19	2019/20	Sep	Oct	2018/19	2019/20	Sep	Oct	2018/19	2019/20	Sep	Oct	MMT	Percent	MMT	Percent
<b>World</b>	32.68	34.16	32.28	31.96	1.32	1.30	1.33	1.33	43.11	44.32	42.97	42.64	-0.33	-0.76	-1.67	-3.78
<b>United States</b>	4.04	4.70	3.64	3.64	1.26	1.15	1.30	1.30	5.11	5.39	4.74	4.73	-0.01	-0.19	-0.66	-12.31
<b>Total Foreign</b>	28.64	29.46	28.64	28.31	1.33	1.32	1.33	1.34	38.01	38.92	38.23	37.91	-0.32	-0.83	-1.01	-2.59
<b>South Asia</b>																
India	12.60	13.30	13.40	13.40	0.87	0.94	0.95	0.95	10.95	12.52	12.74	12.74	0.00	0.00	0.21	1.70
Pakistan	2.30	2.45	2.20	2.20	1.43	1.10	1.22	1.14	3.29	2.69	2.69	2.51	-0.17	-6.48	-0.17	-6.48
<b>China</b>	3.50	3.45	3.25	3.25	3.11	3.10	3.29	3.29	10.88	10.68	10.68	10.68	0.00	0.00	0.00	0.00
<b>Former Soviet Union - 12</b>																
Uzbekistan	1.10	1.01	0.98	0.98	1.17	1.36	1.31	1.33	1.28	1.37	1.27	1.29	0.02	1.57	-0.08	-5.90
Turkmenistan	0.55	0.55	0.60	0.60	0.65	0.66	0.66	0.66	0.36	0.36	0.40	0.40	0.00	0.00	0.04	9.72
Tajikistan	0.18	0.18	0.16	0.16	0.90	1.27	1.22	1.22	0.16	0.23	0.20	0.20	0.00	0.00	-0.03	-14.85
Kazakhstan	0.13	0.13	0.11	0.11	1.05	1.13	1.12	1.12	0.14	0.14	0.12	0.12	0.00	0.00	-0.02	-12.77
<b>South America</b>																
Brazil	1.64	1.67	1.55	1.55	2.59	2.68	2.53	2.53	4.25	4.47	3.93	3.93	0.00	0.00	-0.54	-12.05
Argentina	0.34	0.42	0.43	0.43	0.73	0.68	0.67	0.67	0.25	0.29	0.29	0.29	0.00	0.00	0.00	-0.35
<b>Middle East</b>																
Turkey	0.52	0.57	0.35	0.35	2.35	1.98	2.61	2.61	1.22	1.13	0.91	0.91	0.00	0.00	-0.21	-18.83
Syria	0.03	0.03	0.03	0.03	2.36	2.36	2.36	2.36	0.06	0.06	0.06	0.06	0.00	0.00	0.00	0.00
Iran	0.08	0.08	0.08	0.08	1.16	1.16	1.16	1.16	0.09	0.09	0.09	0.09	0.00	0.00	0.00	0.00
<b>Australia</b>	0.38	0.06	0.30	0.30	1.74	3.12	2.10	2.10	0.66	0.19	0.63	0.63	0.00	0.00	0.44	236.90
<b>European Union</b>	0.31	0.35	0.34	0.33	1.75	1.81	1.67	1.57	0.55	0.64	0.56	0.51	-0.05	-8.72	-0.13	-19.72
<b>Africa</b>																
Burkina	0.63	0.58	0.58	0.58	0.37	0.42	0.43	0.43	0.24	0.24	0.25	0.25	0.00	0.00	0.01	2.47
Mali	0.73	0.74	0.52	0.23	0.50	0.52	0.52	0.56	0.36	0.38	0.27	0.13	-0.14	-52.61	-0.26	-66.75
Cameroon	0.25	0.25	0.25	0.25	1.20	1.29	1.28	1.28	0.30	0.32	0.32	0.32	0.00	0.00	0.00	-0.62
Cote d'Ivoire	0.39	0.41	0.41	0.44	0.64	0.66	0.69	0.63	0.25	0.27	0.28	0.27	-0.01	-2.49	0.01	2.24
Benin	0.65	0.67	0.67	0.60	0.71	0.71	0.71	0.74	0.46	0.47	0.47	0.45	-0.02	-5.11	-0.02	-5.11
Tanzania	0.42	0.60	0.45	0.45	0.39	0.43	0.36	0.36	0.16	0.26	0.16	0.16	0.00	0.00	-0.10	-37.07
Egypt	0.14	0.10	0.07	0.07	1.06	0.92	1.00	1.00	0.15	0.09	0.07	0.07	0.00	0.00	-0.03	-29.35
Nigeria	0.25	0.15	0.27	0.27	0.40	0.57	0.38	0.56	0.10	0.09	0.10	0.15	0.05	47.06	0.06	74.42
Uganda	0.08	0.09	0.10	0.10	1.74	1.67	1.40	1.40	0.14	0.15	0.14	0.14	0.00	0.00	-0.01	-6.04
Zimbabwe	0.20	0.20	0.21	0.21	0.38	0.36	0.36	0.36	0.08	0.07	0.08	0.08	0.00	0.00	0.00	5.56
Sudan	0.18	0.20	0.20	0.20	1.42	1.53	1.41	1.41	0.26	0.31	0.28	0.28	0.00	0.00	-0.02	-7.84
<b>Mexico</b>	0.24	0.23	0.16	0.16	2.44	2.37	2.24	2.24	0.59	0.53	0.36	0.36	0.00	0.00	-0.18	-32.83
<b>Burma</b>	0.24	0.25	0.24	0.24	1.21	1.22	1.25	1.25	0.29	0.30	0.30	0.30	0.00	0.00	0.00	0.67
<b>Others</b>	0.59	0.78	0.77	0.78	0.84	0.76	0.78	0.78	0.49	0.60	0.60	0.61	0.01	1.50	0.01	2.18

World and Selected Countries and Regions



**Table 13 Peanut Area, Yield, and Production**

Country / Region	Area (Million hectares)				Yield (Metric tons per hectare)				Production (Million metric tons)				Change in Production			
	Prel.		2020/21 Proj.		Prel.		2020/21 Proj.		Prel.		2020/21 Proj.		From last month		From last year	
	2018/19	2019/20	Sep	Oct	2018/19	2019/20	Sep	Oct	2018/19	2019/20	Sep	Oct	MMT	Percent	MMT	Percent
<b>World</b>	27.96	27.17	28.49	28.39	1.68	1.70	1.68	1.68	47.06	46.07	47.83	47.78	-0.04	-0.09	1.71	3.71
<b>United States</b>	0.56	0.56	0.66	0.66	4.48	4.41	4.69	4.62	2.49	2.48	3.08	3.04	-0.04	-1.43	0.56	22.46
<b>Total Foreign</b>	27.40	26.61	27.83	27.73	1.63	1.64	1.61	1.61	44.56	43.59	44.75	44.75	0.00	0.00	1.15	2.64
<b>China</b>	4.62	4.60	4.60	4.60	3.75	3.81	3.80	3.80	17.33	17.52	17.50	17.50	0.00	0.00	-0.02	-0.11
<b>Africa</b>																
Nigeria	2.82	2.80	2.80	2.80	1.57	1.25	1.39	1.39	4.42	3.50	3.90	3.90	0.00	0.00	0.40	11.43
Sudan	3.07	2.30	2.30	2.30	0.94	0.78	0.78	0.78	2.88	1.80	1.80	1.80	0.00	0.00	0.00	0.00
Senegal	1.13	1.11	1.20	1.20	1.32	1.28	1.08	1.17	1.50	1.42	1.30	1.40	0.10	7.69	-0.02	-1.41
Cameroon	0.43	0.43	0.43	0.43	1.40	1.40	1.40	1.40	0.60	0.60	0.60	0.60	0.00	0.00	0.00	0.00
Ghana	0.79	0.75	0.75	0.75	0.98	0.87	0.87	0.87	0.77	0.65	0.65	0.65	0.00	0.00	0.00	0.00
Chad	0.79	0.77	0.77	0.77	1.14	1.10	1.10	1.10	0.89	0.85	0.85	0.85	0.00	0.00	0.00	0.00
Malawi	0.41	0.40	0.40	0.40	0.85	0.88	0.88	0.88	0.35	0.35	0.35	0.35	0.00	0.00	0.00	0.00
Congo (Kinshasa)	0.50	0.50	0.50	0.50	0.85	0.85	0.85	0.85	0.42	0.42	0.42	0.42	0.00	0.00	0.00	0.00
Niger	0.93	0.90	0.92	0.92	0.64	0.56	0.65	0.65	0.59	0.50	0.59	0.59	0.00	0.00	0.09	18.80
Mali	0.38	0.43	0.43	0.43	1.31	1.00	1.00	1.00	0.49	0.43	0.43	0.43	0.00	0.00	0.00	0.00
Uganda	0.43	0.43	0.43	0.43	0.71	0.71	0.71	0.71	0.30	0.30	0.30	0.30	0.00	0.00	0.00	0.00
Burkina	0.39	0.56	0.56	0.56	0.84	0.80	0.80	0.80	0.33	0.45	0.45	0.45	0.00	0.00	0.00	0.00
Guinea	0.79	0.75	0.75	0.75	0.98	1.00	1.00	1.00	0.77	0.75	0.75	0.75	0.00	0.00	0.00	0.00
Egypt	0.06	0.06	0.06	0.06	3.20	3.20	3.20	3.20	0.21	0.21	0.21	0.21	0.00	0.00	0.00	0.00
Central African Republic	0.10	0.10	0.10	0.10	1.50	1.50	1.50	1.50	0.15	0.15	0.15	0.15	0.00	0.00	0.00	0.00
South Africa	0.02	0.04	0.04	0.04	1.30	1.84	1.50	1.50	0.03	0.07	0.06	0.06	0.00	0.00	-0.01	-14.29
Mozambique	0.38	0.38	0.38	0.38	0.34	0.34	0.34	0.34	0.13	0.13	0.13	0.13	0.00	0.00	0.00	0.00
Cote d'Ivoire	0.15	0.15	0.15	0.15	1.45	1.45	1.45	1.45	0.21	0.21	0.21	0.21	0.00	0.00	0.00	0.00
Benin	0.23	0.19	0.19	0.19	1.00	0.92	0.92	0.92	0.23	0.18	0.18	0.18	0.00	0.00	0.00	0.00
<b>South Asia</b>																
India	4.73	4.88	5.90	5.80	0.99	1.28	1.15	1.16	4.69	6.26	6.80	6.70	-0.10	-1.47	0.45	7.11
Pakistan	0.12	0.09	0.10	0.10	0.89	0.98	0.92	0.92	0.10	0.09	0.09	0.09	0.00	0.00	0.00	-1.10
<b>Southeast Asia</b>																
Indonesia	0.57	0.55	0.55	0.55	1.80	1.80	1.78	1.78	1.03	0.99	0.97	0.97	0.00	0.00	-0.02	-2.02
Burma	1.03	0.89	0.99	0.99	1.53	1.55	1.57	1.57	1.58	1.38	1.55	1.55	0.00	0.00	0.18	12.73
Vietnam	0.18	0.18	0.18	0.18	2.48	2.48	2.48	2.48	0.44	0.43	0.45	0.45	0.00	0.00	0.01	3.00
Thailand	0.02	0.02	0.02	0.02	1.67	1.67	1.67	1.67	0.04	0.04	0.04	0.04	0.00	0.00	0.00	0.00
<b>South America</b>																
Argentina	0.33	0.37	0.33	0.33	4.35	3.53	4.00	4.00	1.42	1.30	1.32	1.32	0.00	0.00	0.02	1.54
Brazil	0.15	0.16	0.16	0.16	2.96	3.47	3.38	3.38	0.44	0.55	0.54	0.54	0.00	0.00	-0.01	-0.92
<b>Mexico</b>	0.05	0.05	0.06	0.06	1.75	1.74	1.73	1.73	0.09	0.08	0.10	0.10	0.00	0.00	0.02	24.39
<b>Others</b>	1.84	1.80	1.80	1.80	1.16	1.12	1.15	1.15	2.15	2.01	2.07	2.07	0.00	0.00	0.06	3.09

**Table 14 Sunflowerseed Area, Yield, and Production**

Country / Region	Area (Million hectares)				Yield (Metric tons per hectare)				Production (Million metric tons)				Change in Production						
	2018/19	Prel.		2020/21 Proj.		2018/19	Prel.		2020/21 Proj.		2018/19	Prel.		2020/21 Proj.		From last month		From last year	
		2019/20	Sep	Oct	2019/20		Sep	Oct	2019/20	Sep		Oct	MMT	Percent	MMT	Percent			
<b>World</b>	25.80	26.37	26.75	26.61	1.96	2.09	2.02	1.93	50.58	55.02	54.02	51.49	-2.53	-4.68	-3.53	-6.42			
<b>United States</b>	0.49	0.51	0.60	0.66	1.94	1.75	1.84	1.94	0.96	0.89	1.10	1.27	0.18	16.15	0.39	43.52			
<b>Total Foreign</b>	25.31	25.87	26.16	25.95	1.96	2.09	2.02	1.93	49.63	54.13	52.92	50.21	-2.71	-5.12	-3.92	-7.24			
<b>Former Soviet Union - 12</b>																			
Russia	7.94	8.36	8.20	8.20	1.60	1.83	1.65	1.65	12.71	15.31	13.50	13.50	0.00	0.00	-1.81	-11.79			
Ukraine	6.50	6.40	6.80	6.80	2.31	2.58	2.50	2.21	15.00	16.50	17.00	15.00	-2.00	-11.76	-1.50	-9.09			
Kazakhstan	0.85	0.82	0.70	0.70	1.00	1.13	1.07	1.07	0.85	0.92	0.75	0.75	0.00	0.00	-0.17	-18.30			
<b>European Union</b>	4.02	4.31	4.35	4.35	2.37	2.24	2.24	2.18	9.51	9.64	9.75	9.50	-0.25	-2.56	-0.14	-1.48			
<b>South America</b>																			
Argentina	1.88	1.54	1.60	1.40	2.04	2.12	2.13	2.14	3.83	3.27	3.40	3.00	-0.40	-11.76	-0.27	-8.26			
Uruguay	0.06	0.06	0.07	0.07	1.61	1.67	1.69	1.69	0.09	0.10	0.11	0.11	0.00	0.00	0.01	10.00			
Bolivia	0.11	0.11	0.11	0.11	1.25	1.10	1.20	1.20	0.14	0.12	0.13	0.13	0.00	0.00	0.01	7.38			
Brazil	0.06	0.05	0.05	0.05	1.67	1.60	1.50	1.50	0.11	0.08	0.08	0.08	0.00	0.00	-0.01	-6.25			
Paraguay	0.03	0.03	0.03	0.03	1.58	1.70	1.70	1.70	0.05	0.05	0.05	0.05	0.00	0.00	0.00	0.00			
<b>China</b>	0.92	1.25	1.25	1.25	2.71	2.60	2.64	2.64	2.49	3.25	3.30	3.30	0.00	0.00	0.05	1.54			
<b>South Asia</b>																			
India	0.26	0.24	0.25	0.25	0.65	0.58	0.76	0.76	0.17	0.14	0.19	0.19	0.00	0.00	0.05	32.14			
Pakistan	0.12	0.14	0.15	0.15	1.20	1.04	1.07	1.07	0.14	0.15	0.16	0.16	0.00	0.00	0.02	10.34			
<b>Middle East</b>																			
Turkey	0.72	0.73	0.70	0.70	2.52	2.40	2.37	2.37	1.80	1.75	1.66	1.66	0.00	0.00	-0.09	-5.14			
Iran	0.04	0.04	0.04	0.04	1.08	1.08	1.08	1.08	0.04	0.04	0.04	0.04	0.00	0.00	0.00	0.00			
Israel	0.01	0.01	0.01	0.01	1.60	1.60	1.60	1.60	0.02	0.02	0.02	0.02	0.00	0.00	0.00	0.00			
<b>Africa</b>																			
Egypt	0.01	0.01	0.01	0.01	2.38	2.38	2.38	2.38	0.02	0.02	0.02	0.02	0.00	0.00	0.00	0.00			
Morocco	0.02	0.02	0.02	0.02	1.29	1.25	1.25	1.25	0.03	0.03	0.03	0.03	0.00	0.00	0.00	0.00			
South Africa	0.52	0.50	0.52	0.52	1.32	1.57	1.27	1.27	0.68	0.79	0.66	0.66	0.00	0.00	-0.13	-15.92			
<b>Burma</b>	0.60	0.60	0.60	0.60	0.65	0.65	0.65	0.65	0.39	0.39	0.39	0.39	0.00	0.00	0.00	0.00			
<b>Canada</b>	0.03	0.03	0.04	0.04	2.11	2.17	2.38	2.38	0.06	0.06	0.10	0.10	0.00	0.00	0.03	50.79			
<b>Australia</b>	0.02	0.02	0.02	0.02	1.21	1.25	1.26	1.26	0.02	0.03	0.03	0.03	0.00	0.00	0.00	16.00			
<b>Others</b>	0.60	0.59	0.65	0.64	2.49	2.52	2.43	2.35	1.50	1.49	1.57	1.51	-0.06	-3.63	0.02	1.41			

World and Selected Countries and Regions

**Table 15 Rapeseed Area, Yield, and Production**

Country / Region	Area (Million hectares)				Yield (Metric tons per hectare)				Production (Million metric tons)				Change in Production			
	Prel.		2020/21 Proj.		Prel.		2020/21 Proj.		Prel.		2020/21 Proj.		From last month		From last year	
	2018/19	2019/20	Sep	Oct	2018/19	2019/20	Sep	Oct	2018/19	2019/20	Sep	Oct	MMT	Percent	MMT	Percent
<b>World</b>	36.81	34.90	34.71	34.70	1.98	1.98	1.97	1.98	72.86	69.09	68.45	68.87	0.42	0.62	-0.22	-0.32
<b>United States</b>	0.79	0.78	0.75	0.74	2.09	2.00	1.92	1.97	1.64	1.55	1.43	1.46	0.02	1.68	-0.10	-6.31
<b>Total Foreign</b>	36.02	34.12	33.96	33.96	1.98	1.98	1.97	1.99	71.21	67.54	67.02	67.42	0.40	0.60	-0.12	-0.18
<b>European Union</b>	7.00	5.56	5.45	5.45	2.87	3.04	3.08	3.12	20.06	16.88	16.80	17.00	0.20	1.19	0.12	0.71
<b>Canada</b>	9.12	8.46	8.30	8.30	2.26	2.30	2.35	2.34	20.59	19.48	19.50	19.40	-0.10	-0.51	-0.08	-0.40
<b>China</b>	6.55	6.60	6.65	6.65	2.03	2.04	1.98	1.98	13.28	13.49	13.20	13.20	0.00	0.00	-0.29	-2.11
<b>South Asia</b>																
India	7.20	7.40	7.20	7.20	1.11	1.04	1.06	1.06	8.00	7.70	7.65	7.65	0.00	0.00	-0.05	-0.65
Pakistan	0.26	0.40	0.45	0.45	1.04	1.03	1.02	1.02	0.27	0.41	0.46	0.46	0.00	0.00	0.05	12.20
Bangladesh	0.25	0.25	0.25	0.25	0.92	0.92	0.92	0.92	0.23	0.23	0.23	0.23	0.00	0.00	0.00	0.00
<b>Former Soviet Union - 12</b>																
Russia	1.50	1.42	1.40	1.40	1.33	1.44	1.43	1.64	1.99	2.04	2.00	2.30	0.30	15.00	0.26	12.75
Ukraine	1.00	1.34	1.10	1.10	2.85	2.59	2.27	2.27	2.85	3.47	2.50	2.50	0.00	0.00	-0.97	-27.85
Belarus	0.35	0.34	0.35	0.35	1.31	1.68	1.57	1.57	0.46	0.58	0.55	0.55	0.00	0.00	-0.03	-4.84
Kazakhstan	0.37	0.27	0.12	0.12	1.08	0.90	1.04	1.04	0.39	0.24	0.13	0.13	0.00	0.00	-0.12	-48.13
<b>Australia</b>	2.12	1.80	2.40	2.40	1.12	1.29	1.38	1.38	2.37	2.33	3.30	3.30	0.00	0.00	0.97	41.63
<b>South America</b>																
Chile	0.05	0.04	0.03	0.03	3.85	4.05	4.00	4.00	0.19	0.15	0.14	0.14	0.00	0.00	-0.02	-11.69
Paraguay	0.03	0.03	0.04	0.04	1.20	1.87	1.88	1.88	0.04	0.06	0.08	0.08	0.00	0.00	0.02	33.93
<b>Switzerland</b>	0.02	0.02	0.02	0.02	3.14	3.14	3.14	3.14	0.07	0.07	0.07	0.07	0.00	0.00	0.00	0.00
<b>Ethiopia</b>	0.04	0.04	0.04	0.04	1.57	1.86	1.86	1.86	0.06	0.07	0.07	0.07	0.00	0.00	0.00	0.00
<b>Others</b>	0.18	0.17	0.16	0.16	2.14	2.14	2.24	2.24	0.38	0.36	0.36	0.36	0.00	0.00	0.00	-0.84

World and Selected Countries and Regions

**Table 16 Copra, Palm Kernel, and Palm Oil Production**

Country / Region	Production (Million metric tons)				Change in Production			
	2018/19	Prel.	2020/21 Proj.		From last month		From last year	
		2019/20	Sep	Oct	MMT	Percent	MMT	Percent
<b>Oilseed, Copra</b>								
Philippines	2.63	2.50	2.40	2.40	0.00	0.00	-0.10	-4.00
Indonesia	1.64	1.66	1.66	1.66	0.00	0.00	0.00	0.00
India	0.75	0.75	0.75	0.75	0.00	0.00	0.00	0.00
Vietnam	0.29	0.29	0.30	0.30	0.00	0.00	0.01	3.45
Mexico	0.22	0.22	0.22	0.22	0.00	0.00	0.00	0.00
Papua New Guinea	0.10	0.08	0.08	0.08	0.00	0.00	0.00	0.00
Thailand	0.07	0.07	0.07	0.07	0.00	0.00	0.00	0.00
Sri Lanka	0.07	0.07	0.07	0.07	0.00	0.00	0.00	0.00
Solomon Islands	0.03	0.03	0.03	0.03	0.00	0.00	0.00	0.00
Cote d'Ivoire	0.03	0.03	0.03	0.03	0.00	0.00	0.00	0.00
World	5.98	5.86	5.77	5.77	0.00	0.00	-0.09	-1.54
<b>Oilseed, Palm Kernel</b>								
Indonesia	10.90	11.25	11.46	11.46	0.00	0.00	0.21	1.87
Malaysia	5.15	4.80	4.90	5.00	0.10	2.04	0.20	4.17
Thailand	0.87	0.89	0.90	0.90	0.00	0.00	0.01	1.12
Nigeria	0.73	0.73	0.73	0.73	0.00	0.00	0.00	0.00
Ghana	0.77	0.65	0.65	0.65	0.00	0.00	0.00	0.00
Colombia	0.33	0.31	0.35	0.35	0.00	0.00	0.04	12.90
Guatemala	0.20	0.17	0.17	0.17	0.00	0.00	0.00	0.00
Papua New Guinea	0.18	0.16	0.16	0.16	0.00	0.00	0.00	0.00
Brazil	0.14	0.14	0.14	0.14	0.00	0.00	0.00	0.00
Honduras	0.14	0.14	0.14	0.14	0.00	0.00	0.00	0.00
World	20.17	20.00	20.38	20.48	0.10	0.49	0.48	2.40
<b>Oil, Palm</b>								
Indonesia	41.50	42.50	43.50	43.50	0.00	0.00	1.00	2.35
Malaysia	20.80	19.25	19.70	19.90	0.20	1.02	0.65	3.38
Thailand	3.00	2.80	3.10	3.10	0.00	0.00	0.30	10.71
Colombia	1.63	1.53	1.67	1.67	0.00	0.00	0.14	9.15
Nigeria	1.02	1.02	1.02	1.02	0.00	0.00	0.00	0.00
Guatemala	0.85	0.85	0.85	0.85	0.00	0.00	0.00	0.00
Honduras	0.58	0.58	0.58	0.58	0.00	0.00	0.00	0.00
Papua New Guinea	0.71	0.56	0.56	0.56	0.00	0.00	0.00	0.00
Ecuador	0.56	0.55	0.62	0.62	0.00	0.00	0.07	12.73
Brazil	0.53	0.54	0.54	0.54	0.00	0.00	0.00	0.00
World	74.02	73.02	75.00	75.20	0.20	0.27	2.18	2.99

World and Selected Countries and Regions

**Table 17 Cotton Area, Yield, and Production**

Country / Region	Area (Million hectares)				Yield (Kilograms per hectare)				Production (Million 480 lb. bales)				Change in Production			
	2018/19	Prel. 2019/20	2020/21 Proj.		2018/19	Prel. 2019/20	2020/21 Proj.		2018/19	Prel. 2019/20	2020/21 Proj.		From last month		From last year	
			Sep	Oct			Sep	Oct			Sep	Oct	MBales	Percent	MBales	Percent
<b>World</b>	33.35	34.84	32.94	32.63	774	761	775	776	118.58	121.83	117.20	116.27	-0.93	-0.80	-5.56	-4.56
<b>United States</b>	4.04	4.70	3.64	3.64	989	922	1,020	1,018	18.37	19.91	17.06	17.05	-0.02	-0.11	-2.87	-14.40
<b>Total Foreign</b>	29.31	30.14	29.29	28.98	744	736	744	745	100.21	101.92	100.14	99.23	-0.92	-0.91	-2.69	-2.64
<b>South Asia</b>																
India	12.60	13.30	13.40	13.40	446	483	487	487	25.80	29.50	30.00	30.00	0.00	0.00	0.50	1.69
Pakistan	2.30	2.45	2.20	2.20	719	551	614	574	7.60	6.20	6.20	5.80	-0.40	-6.45	-0.40	-6.45
<b>China</b>	3.50	3.45	3.25	3.25	1,726	1,720	1,826	1,826	27.75	27.25	27.25	27.25	0.00	0.00	0.00	0.00
<b>South America</b>																
Brazil	1.64	1.67	1.55	1.55	1,726	1,759	1,686	1,686	13.00	13.45	12.00	12.00	0.00	0.00	-1.45	-10.78
Argentina	0.34	0.42	0.43	0.43	728	684	666	666	1.12	1.32	1.30	1.30	0.00	0.00	-0.02	-1.52
Paraguay	0.01	0.01	0.01	0.01	416	416	416	416	0.02	0.02	0.02	0.02	0.00	0.00	0.00	0.00
<b>Africa</b>																
Burkina	0.63	0.58	0.58	0.58	294	330	341	341	0.85	0.88	0.90	0.90	0.00	0.00	0.02	2.27
Mali	0.73	0.74	0.52	0.23	381	400	402	435	1.27	1.35	0.95	0.45	-0.50	-52.63	-0.90	-66.67
Cote d'Ivoire	0.39	0.41	0.41	0.44	520	528	531	513	0.94	0.99	1.00	1.03	0.03	2.50	0.04	3.54
Benin	0.65	0.67	0.67	0.60	469	467	467	490	1.40	1.43	1.43	1.35	-0.08	-5.26	-0.08	-5.26
Egypt	0.14	0.10	0.07	0.07	757	664	720	720	0.49	0.31	0.22	0.22	0.00	0.00	-0.09	-29.51
Cameroon	0.25	0.25	0.25	0.25	523	562	557	557	0.60	0.65	0.64	0.64	0.00	0.00	-0.01	-0.78
Tanzania	0.42	0.60	0.45	0.45	194	216	181	181	0.38	0.60	0.38	0.38	0.00	0.00	-0.22	-36.97
Nigeria	0.25	0.15	0.27	0.27	205	290	190	282	0.24	0.20	0.24	0.35	0.12	48.94	0.15	75.00
Zimbabwe	0.20	0.20	0.21	0.21	218	207	207	207	0.20	0.19	0.20	0.20	0.00	0.00	0.01	5.26
Ethiopia	0.08	0.08	0.08	0.08	687	680	637	637	0.24	0.25	0.24	0.24	0.00	0.00	-0.01	-4.00
<b>Former Soviet Union - 12</b>																
Uzbekistan	1.10	1.01	0.98	0.98	648	754	726	737	3.28	3.50	3.25	3.30	0.05	1.54	-0.20	-5.71
Turkmenistan	0.55	0.55	0.60	0.60	364	368	367	367	0.91	0.92	1.01	1.01	0.00	0.00	0.09	9.78
Tajikistan	0.18	0.18	0.16	0.16	502	708	680	680	0.42	0.59	0.50	0.50	0.00	0.00	-0.09	-14.53
Kazakhstan	0.13	0.13	0.11	0.11	587	627	623	623	0.35	0.36	0.32	0.32	0.00	0.00	-0.05	-12.50
<b>Middle East</b>																
Turkey	0.52	0.57	0.35	0.35	1,570	1,318	1,742	1,742	3.75	3.45	2.80	2.80	0.00	0.00	-0.65	-18.84
Syria	0.03	0.03	0.03	0.03	1,219	1,219	1,219	1,219	0.14	0.14	0.14	0.14	0.00	0.00	0.00	0.00
Iran	0.08	0.08	0.08	0.08	748	748	748	748	0.28	0.28	0.28	0.28	0.00	0.00	0.00	0.00
<b>Australia</b>	0.38	0.06	0.30	0.30	1,261	2,268	1,524	1,524	2.20	0.63	2.10	2.10	0.00	0.00	1.48	236.00
<b>Mexico</b>	0.24	0.23	0.16	0.16	1,555	1,519	1,429	1,429	1.74	1.57	1.05	1.05	0.00	0.00	-0.52	-33.12
<b>Burma</b>	0.24	0.25	0.24	0.24	637	641	662	662	0.70	0.72	0.73	0.73	0.00	0.00	0.01	0.83
<b>Others</b>	1.75	2.01	1.97	1.99	570	564	556	536	4.58	5.20	5.02	4.89	-0.13	-2.59	-0.31	-5.94

World and Selected Countries and Regions

**TABLE 18**

The table below presents a record of the October projection and the final Estimate. Using world wheat production as an example, the "root mean square error" means that chances are 2 out of 3 that the current forecast will not be above or below the final estimate by more than 1.6 percent. Chances are 9 out of 10 (90% confidence level) that the difference will not exceed 2.8 percent. The average difference between the October projection and the final estimate is 7.1 million tons, ranging from 0.1 million to 26.7 million tons. The October projection has been below the estimate 27 times and above 11 times.

**RELIABILITY OF PRODUCTION PROJECTIONS 1/**

COMMODITY AND REGION	Root mean square error	90 percent confidence interval	Difference between forecast and final estimate				
			Average	Smallest	Largest	Years	
						Below final	Above final
	Percent		---Million metric tons---				
<b>WHEAT</b>							
World	1.6	2.8	7.1	0.1	26.7	27	11
U.S.	0.6	1.0	0.2	0.0	1.2	12	17
Foreign	1.9	3.2	7.1	0.1	26.8	27	11
<b>COARSE GRAINS 2/</b>							
World	1.9	3.2	15.5	0.8	51.9	30	8
U.S.	2.7	4.5	4.6	0.1	17.9	22	16
Foreign	2.5	4.2	15.1	0.6	61.4	31	7
<b>RICE (Milled)</b>							
World	2.3	3.8	6.3	0.0	20.9	29	8
U.S.	3.3	5.5	0.2	0.0	0.5	21	17
Foreign	2.3	3.9	6.3	0.1	21.0	29	9
<b>SOYBEANS</b>							
World	4.4	7.4	6.5	0.1	28.7	19	19
U.S.	2.8	4.8	1.5	0.0	4.0	17	21
Foreign	7.1	12.0	6.4	0.0	28.1	18	20
<b>COTTON</b>			---Million 480-lb. bales---				
World	4.5	7.6	2.9	0.0	10.9	20	17
U.S.	4.8	8.1	0.7	0.0	1.8	22	16
Foreign	5.1	8.7	2.6	0.0	10.5	19	18
<b>UNITED STATES</b>			-----Million bushels-----				
<i>CORN</i>	2.8	4.8	180	5	618	21	17
<i>SORGHUM</i>	4.8	8.1	19	0	71	21	16
<i>BARLEY</i>	1.4	2.5	4	0	24	9	16
<i>OATS</i>	2.5	4.2	2	0	18	6	12

1/ Marketing years 1981/82 through 2019/20 for grains, soybeans (U.S. only), and cotton. Final for grains, soybeans, and cotton is defined as the first November estimate following the marketing year for 1981/82 through 2018/19, and for 2019/20 the last month's estimate.

2/ Includes corn, sorghum, barley, oats, rye, millet, and mixed grain

October 2020

Global Market Analysis, FAS, USDA